

# POWERMASTER

[www.impactsocket.com](http://www.impactsocket.com)

**TORQTOOL**  
IMPACT SOCKETS

**TORQSLEDGE**  
SLUGGING WRENCHES

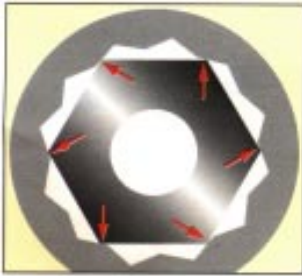


## IMPACT SOCKETS, ACCESSORIES AND SOCKET SETS

- \* Standard, Deep and Thinwall Sockets
- \* Up to 3.1/2" square drive Impact Sockets through to 235MM (9.1/8") across the flats
- \* #5 spline drive to **80mm (4")** across the flats
- \* Wide variety of Accessories

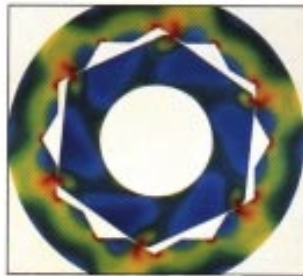
### Freecorner PROFILE

The **Freecorner** profile is provided on the square drives as well as on the hexagon end of Impact Sockets 1/2" square drive and above.

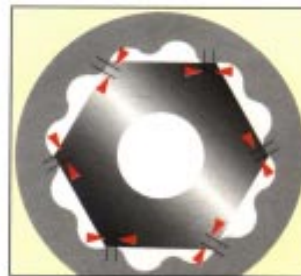


#### CONVENTIONAL PROFILE

Corner point contact high stress areas



Highlights show contact points on the corner of the fastener



#### FREECORNER PROFILE

Distributed surface loads relieves possible stress area



Highlights show contact points away from the corner of the fastener

The benefits of the **Freecorner** profile include are

- Reduced risk of fastener rounding.
- Increased chances of turning worn fasteners.
- Elimination of high stress concentration points increasing the impact resistance and the torque transmitting capability.

### 'TORQTOOL' IMPACT SOCKETS

- '**TORQTOOL**' Impact Sockets of 1/2" square drive and above feature **freecorner** for flats above 17 mm (5/8").
- All Impact Sockets are made from high strength alloy steel.
- All Impact Sockets are heat treated for the best combination of strength and impact resistance.
- All Impact Sockets have an optimum wall thickness for strength and access on fasteners having restrictions.
- The depth of the Hex openings is designed to accommodate the full standard fastener head.
- All Impact Sockets have chamfered openings for ease in engagement with the drive tool and the fastener.
- Concentric openings and large clearance holes to meet industrial specifications.
- All Impact Sockets have a Ring-N-Pin arrangement for securing them to the drive.
- Sockets are plated and black oxidized coated for increased protection from rusting. Pictures on this catalog are shown in yellow instead of black for illustrative purposes only.

#### SAFETY NOTICE

Sockets in this catalog are designed for impact use. Always use safety goggles when using impact equipment.

# TORQTOOL

3/8" SQUARE DRIVE IMPACT SOCKETS

PAGE 4



1/2" SQUARE DRIVE IMPACT SOCKETS

PAGE 6



3/4" SQUARE DRIVE IMPACT SOCKETS

PAGE 9



1" SQUARE DRIVE IMPACT SOCKETS

PAGE 13



1.1/2" SQUARE DRIVE IMPACT SOCKETS

PAGE 19



2.1/2" SQUARE DRIVE IMPACT SOCKETS

PAGE 22



3.1/2" SQUARE DRIVE IMPACT SOCKETS

PAGE 25



# 5 SPLINE DRIVE IMPACT SOCKETS

PAGE 26



STRAIGHT SLUGGING WRENCHES METRIC & SAE

PAGE 29



OFFSET SLUGGING WRENCHES METRIC & SAE

PAGE 31



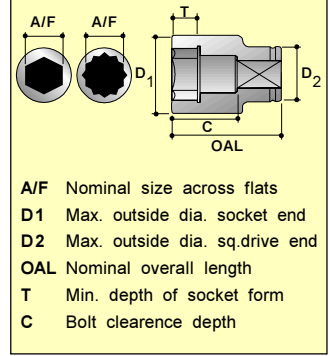
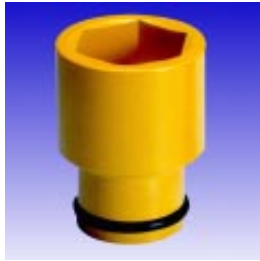
## Torqtool Warranty

The Torqtool warranty will replace free to the original purchaser any qualifying socket found to be defective in either material or workmanship, indicated by premature wear or breakage. Determination of free replacement will be done by your Torqtool distributor. Impact Sockets, by nature of their application are subject to extreme stresses, therefore special application sockets such as thinwall, hex driver, accessories and slugging wrenches are specifically excluded from the replacement warranty.



3/8"

# IMPACT SOCKETS



## METRIC HEXAGON



A/F mm	MODEL NO.	D1 mm	D2 mm	T mm	C mm	OAL mm	Wt. Kg.
8	S-06M8	14.0	19.0	6.0	13.0	27.0	0.025
9	S-06M9	15.0	19.0	7.0	13.0	27.0	0.025
10	S-06M10	16.0	19.0	7.0	13.0	27.0	0.030
11	S-06M11	18.0	19.0	8.0	13.0	27.0	0.030
12	S-06M12	19.0	19.0	9.0	13.0	27.0	0.040
13	S-06M13	22.0	22.0	10.0	16.0	30.0	0.040
14	S-06M14	22.0	22.0	10.0	16.0	30.0	0.050
15	S-06M15	24.0	22.0	11.0	16.0	30.0	0.055
16	S-06M16	24.0	22.0	11.0	16.0	30.0	0.060
17	S-06M17	26.0	22.0	12.0	18.0	32.0	0.060
18	S-06M18	28.0	22.0	12.0	18.0	32.0	0.065
19	S-06M19	28.0	22.0	12.0	18.0	32.0	0.070
20	S-06M20	30.0	24.0	12.0	18.0	32.0	0.090
21	S-06M21	30.0	24.0	12.0	18.0	32.0	0.090
22	S-06M22	32.0	24.0	13.0	18.0	32.0	0.090

## FRACTIONAL HEXAGON



A/F inch	MODEL NO.	D1 inch	D2 inch	T inch	C inch	OAL inch	Wt. lbs.
5/16	S-0605	0.551	0.748	0.236	0.511	1.062	0.055
3/8	S-0606	0.629	0.748	0.275	0.511	1.062	0.055
7/16	S-0607	0.708	0.748	0.314	0.511	1.062	0.075
1/2	S-0608	0.866	0.866	0.354	0.630	1.181	0.088
9/16	S-0609	0.866	0.866	0.393	0.630	1.181	0.110
5/8	S-0610	0.944	0.866	0.433	0.630	1.181	0.120
11/16	S-0611	1.023	0.866	0.472	0.708	1.259	0.135
3/4	S-0612	1.023	0.866	0.472	0.708	1.259	0.155
13/16	S-0613	1.181	0.944	0.472	0.708	1.259	0.200
7/8	S-0614	1.259	0.944	0.511	0.708	1.259	0.220

## METRIC DEEP HEXAGON



A/F mm	MODEL NO.	D1 mm	D2 mm	T mm	C mm	OAL mm	Wt. Kg.
8	S-06M8L	14.0	19.0	6.0	40.0	54.0	0.070
9	S-06M9L	15.0	19.0	7.0	40.0	54.0	0.070
10	S-06M10L	16.0	19.0	7.0	40.0	54.0	0.070
11	S-06M11L	18.0	19.0	8.0	40.0	54.0	0.080
12	S-06M12L	19.0	19.0	9.0	40.0	54.0	0.090
13	S-06M13L	22.0	22.0	10.0	40.0	54.0	0.100
14	S-06M14L	22.0	22.0	10.0	46.0	60.0	0.115
15	S-06M15L	24.0	22.0	11.0	46.0	60.0	0.120
17	S-06M17L	26.0	22.0	12.0	52.0	66.0	0.130
19	S-06M19L	28.0	22.0	12.0	52.0	66.0	0.165

## FRACTIONAL DEEP HEXAGON



A/F inch	MODEL NO.	D1 inch	D2 inch	T inch	C inch	OAL inch	Wt. lbs.
5/16	S-0605L	0.551	0.748	0.236	1.574	2.125	0.155
3/8	S-0606L	0.629	0.748	0.275	1.574	2.125	0.155
7/16	S-0607L	0.708	0.748	0.314	1.574	2.125	0.175
1/2	S-0608L	0.866	0.866	0.354	1.574	2.125	0.220
9/16	S-0609L	0.866	0.866	0.393	1.811	2.362	0.255
5/8	S-0610L	0.944	0.866	0.433	1.811	2.362	0.265
11/16	S-0611L	1.023	0.866	0.472	2.047	2.598	0.365
3/4	S-0612L	1.023	0.866	0.472	2.047	2.598	0.365
13/16	S-0613L	1.181	0.944	0.472	2.047	2.598	0.440
7/8	S-0614L	1.259	0.944	0.511	2.047	2.598	0.485

## METRIC BIHEXAGON



A/F mm	MODEL NO.	D1 mm	D2 mm	T mm	C mm	OAL mm	Wt. Kg.
8	06M8DH	14.0	19.0	6.0	13.0	27.0	0.025
9	06M9DH	15.0	19.0	7.0	13.0	27.0	0.025
10	06M10DH	16.0	19.0	7.0	13.0	27.0	0.030
11	06M11DH	18.0	19.0	8.0	13.0	27.0	0.030
12	06M12DH	19.0	19.0	9.0	13.0	27.0	0.040
13	06M13DH	22.0	22.0	10.0	16.0	30.0	0.040
14	06M14DH	22.0	22.0	10.0	16.0	30.0	0.050
15	06M15DH	24.0	22.0	11.0	16.0	30.0	0.055
16	06M16DH	24.0	22.0	11.0	16.0	30.0	0.060
17	06M17DH	26.0	22.0	12.0	18.0	32.0	0.060
18	06M18DH	28.0	22.0	12.0	18.0	32.0	0.065
19	06M19DH	28.0	22.0	12.0	18.0	32.0	0.070
20	06M20DH	30.0	24.0	12.0	18.0	32.0	0.090
21	06M21DH	30.0	24.0	12.0	18.0	32.0	0.090
22	06M22DH	32.0	24.0	13.0	18.0	32.0	0.090

## FRACTIONAL BIHEXAGON



A/F inch	MODEL NO.	D1 inch	D2 inch	T inch	C inch	OAL inch	Wt. lbs.
3/8	0606DH	0.629	0.748	0.275	0.511	1.062	0.055
7/16	0607DH	0.708	0.748	0.314	0.511	1.062	0.075
1/2	0608DH	0.866	0.866	0.354	0.630	1.181	0.088
9/16	0609DH	0.866	0.866	0.393	0.630	1.181	0.110
5/8	0610DH	0.944	0.866	0.433	0.630	1.181	0.120
11/16	0611DH	1.023	0.866	0.472	0.708	1.259	0.135
3/4	0612DH	1.023	0.866	0.472	0.708	1.259	0.155
13/16	0613DH	1.181	0.944	0.472	0.708	1.259	0.200
7/8	0614DH	1.259	0.944	0.511	0.708	1.259	0.220

# IMPACT SOCKETS THINWALL

3/8"

## METRIC HEXAGON



A/F mm	MODEL NO.	D1 mm	D2 mm	T mm	C mm	OAL mm	Wt. Kg.
8	S-06M8T	12.3	20.0	6.0	13.0	27.0	0.020
10	S-06M10T	14.8	20.0	7.0	13.0	27.0	0.020
11	S-06M11T	16.1	20.0	8.0	13.0	27.0	0.025
13	S-06M13T	18.6	22.0	10.0	16.0	30.0	0.035
17	S-06M17T	23.7	22.0	12.0	18.0	32.0	0.055
19	S-06M19T	26.3	22.0	12.0	18.0	32.0	0.065

## FRACTIONAL HEXAGON



A/F inch	MODEL NO.	D1 inch	D2 inch	T inch	C inch	OAL inch	Wt. lbs.
5/16	S-0605T	0.484	0.748	0.236	0.511	1.062	0.045
3/8	S-0606T	0.555	0.748	0.275	0.511	1.062	0.045
7/16	S-0607T	0.633	0.748	0.314	0.511	1.062	0.065
1/2	S-0608T	0.732	0.866	0.354	0.630	1.181	0.080
9/16	S-0609T	0.799	0.866	0.393	0.630	1.181	0.100
5/8	S-0610T	0.877	0.866	0.433	0.630	1.181	0.110

Thinwall Deep Hexagon Sockets available on request.

# IMPACT ACCESSORIES

## METRIC HEX DRIVER SOCKETS

HEX A/F MM	MODEL NO.	BIT LENGTH	OAL mm	Wt. Kg.
4	06M04H	15.0	45.0	0.035
5	06M05H	15.0	45.0	0.035
6	06M06H	15.0	45.0	0.035
8	06M08H	15.0	45.0	0.045
10	06M10H	15.0	45.0	0.050

## FRACTIONAL HEX DRIVER SOCKETS

HEX A/F SAE	MODEL NO.	BIT LENGTH	OAL inch	Wt. lbs.
5/32	06005H	0.590	1.771	0.080
3/16	0603H	0.590	1.771	0.080
7/32	06007H	0.590	1.771	0.080
1/4	0604H	0.590	1.771	0.080
5/16	0605H	0.590	1.771	0.090
3/8	0606H	0.590	1.771	0.110

## REGULAR EXTENSIONS

OAL mm	MODEL NO.	SHANK DIA mm (inch)	HEAD DIA mm (inch)	Wt. Kg. (lbs.)
75 (3")	E0603	13.0 (0.511)	22.0 (0.866)	0.09 (0.20)
150 (6")	E0606			0.16 (0.35)
300 (12")	E0612			0.35 (0.77)



## SQUARE ADAPTORS

SIZE	MODEL NO.	HEAD DIA mm (inch)	OAL mm (inch)	Wt. Kg. (lbs.)
3/8" F X 1/2" M	A0608	22.0 (0.866)	35.0 (1.377)	0.70 (1.54)
3/8" F X 3/8" M	A0606		32.0 (1.259)	0.50 (1.10)



## UNIVERSAL JOINT

SQUARE DRIVE	MODEL NO.	DIA mm (inch)	OAL mm (inch)	Wt. Kg. (lbs.)
3/8"	U0606	22.0 (0.866)	52.0 (2.047)	0.12 (0.27)



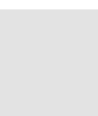
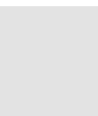
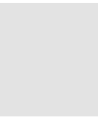
## DOUBLE MALE EXTENSIONS

OAL mm	MODEL NO.	SHANK DIA mm (inch)	HEAD DIA mm (inch)	Wt. Kg. (lbs.)
75 (3")	S0603	13.0 (0.511)	9.3 (0.366)	0.06 (0.13)
125 (5")	S0605			0.12 (0.26)
250 (10")	S0610			0.30 (0.66)



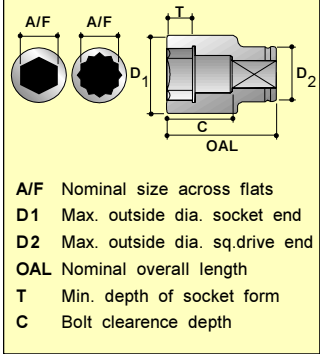
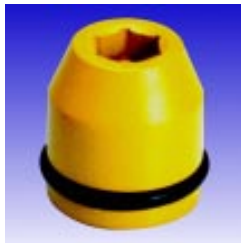
## DOUBLE FEMALE ADAPTORS

SIZE	MODEL NO.	HEAD DIA mm (inch)	OAL mm (inch)	Wt. Kg. (lbs.)
3/8" F X 1/2" F	AN0608	22.0 (0.866)	38.0 (1.496)	0.90 (1.98)
3/8" F X 3/8" F	AN0606		35.0 (1.377)	0.70 (1.54)



1/2"

# IMPACT SOCKETS



## METRIC HEXAGON

A/F mm	MODEL NO.	D1 mm	D2 mm	T mm	C mm	OAL mm	Wt. Kg.
8	S-08M8	16.0	25.0	6.0	15.0	32.0	0.080
9	S-08M9	16.0	25.0	7.0	15.0	32.0	0.080
10	S-08M10	18.0	25.0	8.0	15.0	32.0	0.090
11	S-08M11	20.0	25.0	9.0	15.0	32.0	0.090
12	S-08M12	20.0	25.0	9.0	17.0	34.0	0.080
13	S-08M13	23.0	25.0	10.0	17.0	34.0	0.080
14	S-08M14	23.0	25.0	10.0	17.0	34.0	0.080
15	S-08M15	25.0	30.0	11.0	19.0	36.0	0.140
16	S-08M16	27.0	30.0	11.0	19.0	36.0	0.130
17	S-08M17	27.0	30.0	12.0	19.0	36.0	0.130
18	S-08M18	30.0	30.0	13.0	19.0	36.0	0.130
19	S-08M19	30.0	30.0	13.0	19.0	36.0	0.130
21	S-08M21	32.0	30.0	14.0	21.0	38.0	0.170
22	S-08M22	32.0	30.0	14.0	21.0	38.0	0.180
23	S-08M23	36.0	30.0	14.0	23.0	41.0	0.210
24	S-08M24	36.0	30.0	14.0	23.0	41.0	0.230
25	S-08M25	40.0	30.0	14.0	23.0	41.0	0.230
26	S-08M26	40.0	35.0	16.0	23.0	41.0	0.270
27	S-08M27	40.0	35.0	16.0	23.0	41.0	0.270
28	S-08M28	41.0	35.0	16.0	25.0	42.0	0.260
30	S-08M30	43.0	35.0	17.0	28.0	45.0	0.290
32	S-08M32	45.0	35.0	18.0	28.0	45.0	0.390
36	S-08M36	50.0	44.0	20.0	31.0	48.0	0.550

## FRACTIONAL HEXAGON

A/F inch	MODEL NO.	D1 inch	D2 inch	T inch	C inch	OAL inch	Wt. lbs.
3/8	S-0806	0.708	0.984	0.275	0.590	1.259	0.175
7/16	S-0807	0.787	0.984	0.354	0.590	1.259	0.175
1/2	S-0808	0.905	0.984	0.354	0.699	1.338	0.175
9/16	S-0809	0.905	0.984	0.393	0.699	1.338	0.185
5/8	S-0810	1.062	1.181	0.433	0.748	1.417	0.285
11/16	S-0811	1.181	1.181	0.472	0.748	1.417	0.305
3/4	S-0812	1.181	1.181	0.511	0.748	1.417	0.305
13/16	S-0813	1.259	1.181	0.551	0.826	1.496	0.395
7/8	S-0814	1.259	1.181	0.551	0.826	1.496	0.375
15/16	S-0815	1.417	1.181	0.551	0.905	1.614	0.450
1	S-0816	1.574	1.181	0.629	0.905	1.614	0.505
1.1/16	S-0817	1.574	1.377	0.629	0.905	1.614	0.625
1.1/8	S-0818	1.614	1.377	0.629	0.984	1.653	0.725
1.3/16	S-0819	1.692	1.377	0.669	1.102	1.771	0.770
1.1/4	S-0820	1.771	1.377	0.669	1.102	1.771	0.880
1.5/16	S-0821	1.850	1.377	0.708	1.102	1.771	0.945
1.3/8	S-0822	1.968	1.377	0.787	1.220	1.889	1.080
1.7/16	S-0823	1.968	1.732	0.866	1.220	1.889	1.210
1.1/2	S-0824	2.086	1.732	0.866	1.338	2.007	1.255

## METRIC DEEP HEXAGON

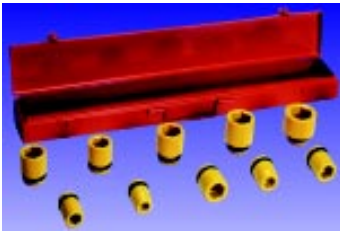
A/F mm	MODEL NO.	D1 mm	D2 mm	T mm	C mm	OAL mm	Wt. Kg.
8	S-08M8L	16.0	25.0	6.0	68.0	85.0	0.155
9	S-08M9L	16.0	25.0	7.0	68.0	85.0	0.155
10	S-08M10L	18.0	25.0	8.0	68.0	85.0	0.155
11	S-08M11L	20.0	25.0	9.0	68.0	85.0	0.175
12	S-08M12L	20.0	25.0	9.0	68.0	85.0	0.175
13	S-08M13L	23.0	25.0	10.0	68.0	85.0	0.200
14	S-08M14L	23.0	25.0	10.0	68.0	85.0	0.225
15	S-08M15L	25.0	30.0	11.0	68.0	85.0	0.300
16	S-08M16L	27.0	30.0	11.0	68.0	85.0	0.305
17	S-08M17L	27.0	30.0	12.0	68.0	85.0	0.335
18	S-08M18L	30.0	30.0	13.0	68.0	85.0	0.350
19	S-08M19L	30.0	30.0	13.0	68.0	85.0	0.338
21	S-08M21L	32.0	30.0	14.0	68.0	85.0	0.350
22	S-08M22L	32.0	30.0	14.0	68.0	85.0	0.415
23	S-08M23L	36.0	30.0	14.0	68.0	85.0	0.405
24	S-08M24L	36.0	30.0	14.0	68.0	85.0	0.400
25	S-08M25L	40.0	30.0	14.0	68.0	85.0	0.480
26	S-08M26L	40.0	35.0	16.0	68.0	85.0	0.490
27	S-08M27L	40.0	35.0	16.0	68.0	85.0	0.750
28	S-08M28L	41.0	35.0	16.0	68.0	85.0	0.600
30	S-08M30L	43.0	35.0	17.0	68.0	85.0	0.775
32	S-08M32L	45.0	35.0	18.0	68.0	85.0	0.775
36	S-08M36L	50.0	44.0	20.0	68.0	85.0	0.800

## FRACTIONAL DEEP HEXAGON

A/F inch	MODEL NO.	D1 inch	D2 inch	T inch	C inch	OAL inch	Wt. lbs.
3/8	S-0806L	0.708	0.984	0.275	2.676	3.346	0.285
7/16	S-0807L	0.787	0.984	0.354	2.676	3.346	0.330
1/2	S-0808L	0.905	0.984	0.354	2.676	3.346	0.400
9/16	S-0809L	0.905	0.984	0.393	2.676	3.346	0.485
5/8	S-0810L	1.062	1.181	0.433	2.676	3.346	0.530
11/16	S-0811L	1.181	1.181	0.472	2.676	3.346	0.530
3/4	S-0812L	1.181	1.181	0.511	2.676	3.346	0.705
13/16	S-0813L	1.259	1.181	0.551	2.676	3.346	0.750
7/8	S-0814L	1.259	1.181	0.551	2.676	3.346	0.750
15/16	S-0815L	1.417	1.181	0.551	2.676	3.346	0.880
1	S-0816L	1.574	1.181	0.629	2.676	3.346	1.210
1.1/16	S-0817L	1.574	1.377	0.629	2.676	3.346	1.210
1.1/8	S-0818L	1.614	1.377	0.629	2.676	3.346	1.265
1.3/16	S-0819L	1.692	1.377	0.669	2.676	3.346	1.375
1.1/4	S-0820L	1.771	1.377	0.669	2.676	3.346	1.715
1.5/16	S-0821L	1.850	1.377	0.708	2.676	3.346	1.780
1.3/8	S-0822L	1.968	1.377	0.787	2.676	3.346	1.800
1.7/16	S-0823L	1.968	1.732	0.866	2.676	3.346	1.870
1.1/2	S-0824L	2.086	1.732	0.866	2.676	3.346	1.915

# IMPACT SOCKET SETS

1/2"



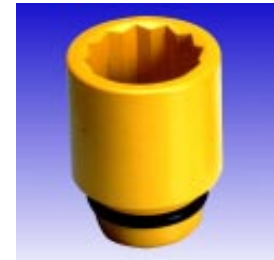
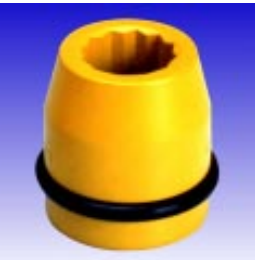
## METRIC SIZE

MODEL NO.	QTY.	SOCKET A/F
S-08M51	13 PIECES	8,9,10,11,12,13,14,15,16,17,18,19,21
S-08M52	16 PIECES	10,11,12,13,14,15,16,17,18,19,20,21,22,23,24,27
S-08M53	6 PIECES	13,14,15,16,17,18
S-08LM51	16 PIECES DEEP	10,11,12,13,14,15,16,17,18,19,20,21,22,23,24,27
S-08LM52	12 PIECES DEEP	10,11,12,13,14,15,16,17,18,19,20,21

## FRACTIONAL SIZE

MODEL NO.	QTY.	SOCKET A/F
S-0851	11 PIECES + UJOINT	1/2,9/16,5/8,3/4,13/16,7/8,15/16, 1, 1.1/16,1.1/8,U-JOINT
S-0852	13 PIECES	7/16,1/2,9/16,5/8,11/16,3/4,13/16, 7/8,15/16,1,1.1/16,1.1/8,1.3/4
S-0853	7 PIECES	7/16,1/2,9/16,5/8,11/16,3/4,13/16
S-08L51	14 PIECES DEEP	3/8,7/16,1/2,9/16,5/8,11/16,3/4,13/16, 7/8,15/16,1,1.1/16,1.1/8,1.1/4
S-08L52	7 PIECES DEEP	7/16,1/2,9/16,5/8,11/16,3/4,13/16

# IMPACT SOCKETS



## METRIC BIHEXAGON



A/F mm	MODEL NO.	D1 mm	D2 mm	T mm	C mm	OAL mm	Wt. Kg.
8	08M8DH	16.0	25.0	6.0	15.0	32.0	0.080
9	08M9DH	16.0	25.0	7.0	15.0	32.0	0.080
10	08M10DH	18.0	25.0	8.0	15.0	32.0	0.090
11	08M11DH	20.0	25.0	9.0	15.0	32.0	0.090
12	08M12DH	20.0	25.0	9.0	17.0	34.0	0.080
13	08M13DH	23.0	25.0	10.0	17.0	34.0	0.080
14	08M14DH	23.0	25.0	10.0	17.0	34.0	0.080
15	08M15DH	25.0	30.0	11.0	19.0	36.0	0.140
16	08M16DH	27.0	30.0	11.0	19.0	36.0	0.130
17	08M17DH	27.0	30.0	12.0	19.0	36.0	0.130
18	08M18DH	30.0	30.0	13.0	19.0	36.0	0.130
19	08M19DH	30.0	30.0	13.0	19.0	36.0	0.130
21	08M21DH	32.0	30.0	14.0	21.0	38.0	0.170
22	08M22DH	32.0	30.0	14.0	21.0	38.0	0.180
23	08M23DH	32.0	30.0	14.0	23.0	41.0	0.210
24	08M24DH	36.0	30.0	14.0	23.0	41.0	0.230
25	08M25DH	40.0	30.0	14.0	23.0	41.0	0.230
26	08M26DH	40.0	35.0	16.0	23.0	41.0	0.270
27	08M27DH	40.0	35.0	16.0	23.0	41.0	0.270
28	08M28DH	41.0	35.0	16.0	25.0	42.0	0.260
30	08M30DH	43.0	35.0	17.0	28.0	45.0	0.290
32	08M32DH	45.0	35.0	18.0	28.0	45.0	0.390
36	08M36DH	50.0	44.0	20.0	31.0	48.0	0.490

## FRACTIONAL BIHEXAGON



A/F inch	MODEL NO.	D1 inch	D2 inch	T inch	C inch	OAL inch	Wt. lbs.
7/16	0807DH	0.787	0.984	0.354	0.590	1.259	0.175
1/2	0808DH	0.905	0.984	0.354	0.699	1.338	0.175
9/16	0809DH	0.905	0.984	0.393	0.699	1.338	0.190
5/8	0810DH	1.062	1.181	0.433	0.748	1.417	0.285
11/16	0811DH	1.181	1.181	0.472	0.748	1.417	0.310
3/4	0812DH	1.181	1.181	0.511	0.748	1.417	0.310
13/16	0813DH	1.259	1.181	0.551	0.826	1.496	0.400
7/8	0814DH	1.259	1.181	0.551	0.826	1.496	0.375
15/16	0815DH	1.417	1.181	0.551	0.905	1.614	0.450
1	0816DH	1.574	1.181	0.629	0.905	1.614	0.505
1.1/16	0817DH	1.574	1.377	0.629	0.905	1.614	0.625
1.1/8	0818DH	1.614	1.377	0.629	0.984	1.653	0.725
1.3/16	0819DH	1.692	1.377	0.669	1.102	1.771	0.770
1.1/4	0820DH	1.771	1.377	0.669	1.102	1.771	0.880
1.5/16	0821DH	1.850	1.377	0.708	1.102	1.771	0.945
1.3/8	0822DH	1.968	1.377	0.787	1.220	1.889	1.080
1.7/16	0823DH	1.968	1.732	0.866	1.220	1.889	1.255
1.1/2	0824DH	2.086	1.732	0.866	1.338	2.007	1.255

1/2"

# IMPACT SOCKETS THINWALL

## METRIC HEXAGON

A/F mm	MODEL NO.	D1 mm	D2 mm	T mm	C mm	OAL mm	Wt. Kg.
15	S-08M15T	22.0	30.0	11.0	19.0	36.0	0.120
16	S-08M16T	23.3	30.0	11.0	19.0	36.0	0.120
17	S-08M17T	24.5	30.0	12.0	19.0	36.0	0.120
18	S-08M18T	26.0	30.0	13.0	19.0	36.0	0.120
19	S-08M19T	27.0	30.0	13.0	19.0	36.0	0.120
21	S-08M21T	29.5	30.0	14.0	21.0	38.0	0.160

## FRACTIONAL HEXAGON

A/F inch	MODEL NO.	D1 inch	D2 inch	T inch	C inch	OAL inch	Wt. lbs.
9/16	S-0809T	0.826	0.984	0.393	0.669	1.338	0.165
5/8	S-0810T	0.905	1.181	0.433	0.748	1.417	0.240
11/16	S-0811T	0.984	1.181	0.472	0.748	1.417	0.265
3/4	S-0812T	1.062	1.181	0.511	0.748	1.417	0.265
13/16	S-0813T	1.141	1.181	0.551	0.826	1.496	0.350
15/16	S-0815T	1.318	1.181	0.551	0.905	1.614	0.420

Thinwall Deep Hexagon Sockets available on request.

# IMPACT ACCESSORIES

## METRIC HEX DRIVER SOCKETS

HEX A/F mm	MODEL NO.	BIT LENGTH	OAL mm	Wt. kg.
6	08M6H	15.0	50.0	0.080
8	08M8H	15.0	50.0	0.080
10	08M10H	18.0	55.0	0.090
12	08M12H	18.0	60.0	0.110
14	08M14H	25.0	60.0	0.125
17	08M17H	25.0	60.0	0.145

## FRACTIONAL HEX DRIVE SOCKETS

HEX A/F inch	MODEL NO.	BIT LENGTH	OAL inch	Wt. lbs.
1/4	0804H	0.590	1.968	0.160
5/16	0805H	0.590	1.968	0.175
3/8	0806H	0.708	2.165	0.190
7/16	0807H	0.708	2.362	0.200
1/2	0808H	0.708	2.362	0.255
9/16	0809H	0.984	2.362	0.255

## REGULAR EXTENSIONS

OAL mm (inch)	MODEL NO.	SHANK DIA mm (inch)	HEAD DIA mm (inch)	Wt. Kg. (lbs.)
75 (3")	E0803			0.20 (0.44)
125 (5")	E0805	20.0 (0.787)	30.0 (1.181)	0.27 (0.59)
200 (8")	E0810			0.38 (0.83)



## SQUARE ADAPTORS

SIZE	MODEL NO.	HEAD DIA mm (inch)	OAL mm (inch)	Wt. Kg. (lbs.)
1/2" F X 3/4" M	A0812	30.0 (1.181)	50.0 (1.968)	0.17 (0.37)



## UNIVERSAL JOINT

SQUARE DRIVE	MODEL NO.	DIA mm (inch)	OAL mm (inch)	Wt. Kg. (lbs.)
1/2"	U0808	30.0 (1.181)	72.0 (2.834)	0.25 (0.55)



## DOUBLE MALE EXTENSIONS

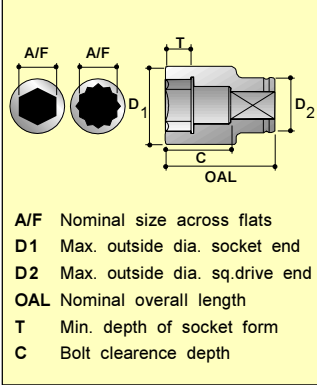
OAL mm (inch)	MODEL NO.	SHANK DIA mm (inch)	HEAD DIA mm (inch)	Wt. Kg. (lbs.)
50 (2")	S0802			0.12 (0.26)
127 (5")	S0805	17.0 (0.669)	12.7 (0.500)	0.23 (0.50)
254 (10")	S0810			0.30 (0.66)



## DOUBLE FEMALE ADAPTORS

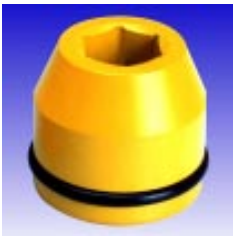
SIZE	MODEL NO.	HEAD DIA mm (inch)	OAL mm (inch)	Wt. Kg. (lbs.)
1/2" F X 1/2" F	AN0808		39.0 (1.534)	0.16 (0.35)
1/2" F X 3/4" F	AN0812	30.0 (1.181)	47.0 (1.850)	0.20 (0.44)





# IMPACT SOCKETS

3/4"



## METRIC HEXAGON



A/F mm	MODEL NO.	D1 mm	D2 mm	T mm	C mm	OAL mm	Wt. Kg.
17	S-12M17	32.0	44.0	12.0	20.0	45.0	0.370
19	S-12M19	33.0	44.0	12.0	20.0	45.0	0.370
21	S-12M21	36.0	44.0	13.0	23.0	48.0	0.380
22	S-12M22	37.0	44.0	13.0	23.0	48.0	0.380
23	S-12M23	41.0	44.0	13.0	23.0	48.0	0.380
24	S-12M24	41.0	44.0	16.0	23.0	48.0	0.400
26	S-12M26	41.0	44.0	16.0	23.0	48.0	0.400
27	S-12M27	43.0	44.0	16.0	23.0	48.0	0.400
28	S-12M28	45.0	44.0	18.0	23.0	48.0	0.410
30	S-12M30	47.0	44.0	18.0	27.0	52.0	0.425
32	S-12M32	50.0	44.0	19.0	27.0	55.0	0.460
33	S-12M33	50.0	44.0	19.0	30.0	55.0	0.480
34	S-12M34	52.0	44.0	20.0	30.0	55.0	0.500
36	S-12M36	54.0	44.0	20.0	31.0	56.0	0.575
38	S-12M38	57.0	44.0	20.0	34.0	59.0	0.600
41	S-12M41	61.0	44.0	22.0	34.0	59.0	0.625
42	S-12M42	64.0	44.0	22.0	34.0	59.0	0.625
43	S-12M43	64.0	44.0	22.0	39.0	64.0	0.625
46	S-12M46	67.0	44.0	23.0	39.0	64.0	0.825
50	S-12M50	73.0	54.0	25.0	42.0	67.0	1.300

## FRACTIONAL HEXAGON



A/F inch	MODEL NO.	D1 inch	D2 inch	T inch	C inch	OAL inch	Wt. lbs.
9/16	S-1209	1.023	1.732	0.472	0.771	1.771	0.485
5/8	S-1210	1.181	1.732	0.472	0.771	1.771	0.795
11/16	S-1211	1.259	1.732	0.472	0.771	1.771	0.835
3/4	S-1212	1.299	1.732	0.472	0.771	1.771	0.835
13/16	S-1213	1.417	1.732	0.511	0.889	1.889	0.880
7/8	S-1214	1.456	1.732	0.511	0.889	1.889	0.880
15/16	S-1215	1.614	1.732	0.629	0.889	1.889	0.880
1	S-1216	1.614	1.732	0.629	0.889	1.889	0.880
1.1/16	S-1217	1.629	1.732	0.629	0.889	1.889	0.880
1.1/8	S-1218	1.771	1.732	0.708	0.889	1.889	0.915
1.3/16	S-1219	1.850	1.732	0.708	1.047	2.047	0.935
1.1/4	S-1220	1.968	1.732	0.748	1.047	2.047	0.980
1.5/16	S-1221	2.047	1.732	0.748	1.165	2.165	1.035
1.3/8	S-1222	2.125	1.732	0.787	1.165	2.165	1.210
1.7/16	S-1223	2.125	1.732	0.787	1.204	2.204	1.210
1.1/2	S-1224	2.244	1.732	0.787	1.322	2.322	1.375
1.9/16	S-1225	2.401	1.732	0.787	1.322	2.322	1.375
1.5/8	S-1226	2.401	1.732	0.866	1.322	2.322	1.320
1.11/16	S-1227	2.519	1.732	0.866	1.519	2.519	1.375
1.3/4	S-1228	2.519	1.732	0.866	1.519	2.519	1.540
1.13/16	S-1229	2.637	2.125	0.905	1.519	2.519	1.815
1.7/8	S-1230	2.755	2.125	0.905	1.519	2.519	2.310
2	S-1232	2.874	2.125	0.984	1.637	2.637	2.640

## METRIC DEEP HEXAGON

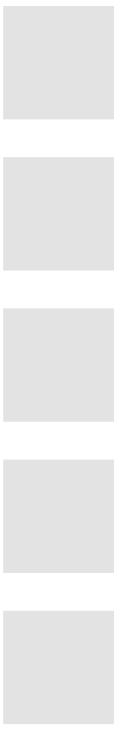
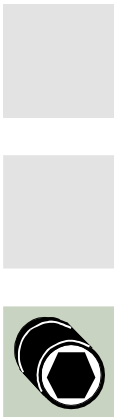


A/F mm	MODEL NO.	D1 mm	D2 mm	T mm	C mm	OAL mm	Wt. Kg.
17	S-12M17L	32.0	44.0	12.0	50.0	75.0	0.600
19	S-12M19L	33.0	44.0	12.0	50.0	75.0	0.600
21	S-12M21L	36.0	44.0	13.0	50.0	75.0	0.630
22	S-12M22L	37.0	44.0	13.0	65.0	90.0	0.680
23	S-12M23L	41.0	44.0	13.0	65.0	90.0	0.680
24	S-12M24L	41.0	44.0	16.0	65.0	90.0	0.710
26	S-12M26L	41.0	44.0	16.0	65.0	90.0	0.710
27	S-12M27L	43.0	44.0	16.0	65.0	90.0	0.710
28	S-12M28L	45.0	44.0	18.0	65.0	90.0	0.710
30	S-12M30L	47.0	44.0	18.0	65.0	90.0	0.750
32	S-12M32L	50.0	44.0	19.0	65.0	90.0	0.810
33	S-12M33L	50.0	44.0	19.0	65.0	90.0	0.810
34	S-12M34L	52.0	44.0	20.0	65.0	90.0	0.800
36	S-12M36L	54.0	44.0	20.0	65.0	90.0	0.875
38	S-12M38L	57.0	44.0	20.0	65.0	90.0	0.900
41	S-12M41L	61.0	44.0	22.0	65.0	90.0	0.925
42	S-12M42L	64.0	44.0	22.0	70.0	95.0	1.100
43	S-12M43L	64.0	44.0	22.0	70.0	95.0	1.100
46	S-12M46L	67.0	44.0	23.0	75.0	100.0	1.325
50	S-12M50L	73.0	54.0	25.0	75.0	100.0	1.600

## FRACTIONAL DEEP HEXAGON



A/F inch	MODEL NO.	D1 inch	D2 inch	T inch	C inch	OAL inch	Wt. lbs.
9/16	S-1209L	1.023	1.732	0.472	1.952	2.952	1.100
5/8	S-1210L	1.181	1.732	0.472	1.952	2.952	1.165
11/16	S-12011L	1.259	1.732	0.472	1.952	2.952	1.320
3/4	S-1212L	1.299	1.732	0.472	1.952	2.952	1.320
13/16	S-1213L	1.417	1.732	0.511	1.952	2.952	1.595
7/8	S-1214L	1.456	1.732	0.511	2.543	3.543	1.650
15/16	S-1215L	1.614	1.732	0.629	2.543	3.543	1.815
1	S-1216L	1.614	1.732	0.629	2.543	3.543	1.870
1.1/16	S-1217L	1.629	1.732	0.629	2.543	3.543	1.870
1.1/8	S-1218L	1.771	1.732	0.708	2.543	3.543	1.935
1.3/16	S-1219L	1.850	1.732	0.708	2.543	3.543	1.980
1.1/4	S-1220L	1.968	1.732	0.748	2.543	3.543	1.980
1.5/16	S-1221L	2.047	1.732	0.748	2.543	3.543	2.090
1.3/8	S-1222L	2.125	1.732	0.787	2.543	3.543	2.090
1.7/16	S-1223L	2.125	1.732	0.787	2.543	3.543	2.120
1.1/2	S-1224L	2.244	1.732	0.787	2.543	3.543	2.360
1.9/16	S-1225L	2.401	1.732	0.787	2.543	3.543	2.450
1.5/8	S-1226L	2.401	1.732	0.866	2.543	3.543	2.580
1.11/16	S-1227L	2.519	1.732	0.866	2.740	3.740	2.660
1.3/4	S-1228L	2.519	1.732	0.866	2.740	3.740	2.740
1.13/16	S-1229L	2.637	2.125	0.905	2.937	3.937	2.870
1.7/8	S-1230L	2.755	2.125	0.905	2.937	3.937	3.090
2	S-1232L	2.874	2.125	0.984	2.937	3.937	3.180



3/4"

# IMPACT SOCKETS

## METRIC BIHEXAGON



A/F mm	MODEL NO.	D1 mm	D2 mm	T mm	C mm	OAL mm	Wt. Kg.
17	12M17DH	32.0	44.0	12.0	20.0	45.0	0.370
19	12M19DH	33.0	44.0	12.0	20.0	45.0	0.370
21	12M21DH	36.0	44.0	13.0	23.0	48.0	0.380
22	12M22DH	37.0	44.0	13.0	23.0	48.0	0.380
23	12M23DH	41.0	44.0	13.0	23.0	48.0	0.390
24	12M24DH	41.0	44.0	16.0	23.0	48.0	0.400
26	12M26DH	41.0	44.0	16.0	23.0	48.0	0.400
27	12M27DH	43.0	44.0	16.0	23.0	48.0	0.400
28	12M28DH	45.0	44.0	18.0	23.0	48.0	0.410
30	12M30DH	47.0	44.0	18.0	27.0	52.0	0.425
32	12M32DH	50.0	44.0	19.0	27.0	52.0	0.460
33	12M33DH	50.0	44.0	19.0	30.0	55.0	0.480
34	12M34DH	52.0	44.0	20.0	30.0	55.0	0.500
36	12M36DH	54.0	44.0	20.0	31.0	56.0	0.575
38	12M38DH	57.0	44.0	20.0	34.0	59.0	0.600
41	12M41DH	61.0	44.0	22.0	34.0	59.0	0.625
42	12M42DH	64.0	44.0	22.0	34.0	59.0	0.625
43	12M43DH	64.0	44.0	22.0	39.0	64.0	0.625
46	12M46DH	67.0	54.0	23.0	39.0	64.0	0.825
50	12M50DH	73.0	54.0	25.0	42.0	67.0	1.300
55	12M55DH	78.0	54.0	28.0	46.0	71.0	1.850
60	12M60DH	84.0	54.0	30.0	50.0	75.0	2.050

## FRACTIONAL BIHEXAGON



A/F inch	MODEL NO.	D1 inch	D2 inch	T inch	C inch	OAL inch	Wt. lbs.
9/16	1209DH	1.023	1.732	0.472	0.771	1.771	0.700
5/8	1210DH	1.181	1.732	0.472	0.771	1.771	0.815
11/16	1211DH	1.259	1.732	0.472	0.771	1.771	0.815
3/4	1212DH	1.299	1.732	0.472	0.771	1.771	0.815
13/16	1213DH	1.417	1.732	0.511	0.889	1.889	0.835
7/8	1214DH	1.456	1.732	0.511	0.889	1.889	0.835
15/16	1215DH	1.614	1.732	0.629	0.889	1.889	0.880
1	1216DH	1.614	1.732	0.629	0.889	1.889	0.880
1.1/16	1217DH	1.629	1.732	0.629	0.889	1.889	0.880
1.1/8	1218DH	1.771	1.732	0.708	0.889	1.889	0.900
1.3/16	1219DH	1.850	1.732	0.708	1.047	2.047	0.935
1.1/4	1220DH	1.968	1.732	0.748	1.047	2.047	1.055
1.5/16	1221DH	2.047	1.732	0.748	1.165	2.165	1.100
1.3/8	1222DH	2.125	1.732	0.787	1.165	2.165	1.265
1.7/16	1223DH	2.125	1.732	0.787	1.204	2.204	1.265
1.1/2	1224DH	2.244	1.732	0.787	1.322	2.322	1.320
1.9/16	1225DH	2.401	1.732	0.787	1.322	2.322	1.375
1.5/8	1226DH	2.401	1.732	0.866	1.322	2.322	1.375
1.11/16	1227DH	2.519	1.732	0.866	1.519	2.519	1.375
1.3/4	1228DH	2.519	1.732	0.866	1.519	2.519	1.540
1.13/16	1229DH	2.637	1.732	0.905	1.519	2.519	1.815
1.7/8	1230DH	2.755	2.125	0.905	1.519	2.519	1.815
2	1232DH	2.874	2.125	0.984	1.637	2.637	3.080

## METRIC BISQUARE



A/F mm	MODEL NO.	D1 mm	D2 mm	T mm	C mm	OAL mm	Wt. Kg.
32	12M32DS	62.0	44.0	19.0	27.0	52.0	0.510
33	12M33DS	65.0	44.0	19.0	27.0	52.0	0.540
34	12M34DS	65.0	44.0	20.0	30.0	55.0	0.550
36	12M36DS	68.0	44.0	20.0	30.0	55.0	0.610
38	12M38DS	70.0	54.0	20.0	30.0	55.0	0.700
39	12M39DS	73.0	54.0	20.0	30.0	55.0	0.725
40	12M40DS	73.0	54.0	20.0	30.0	55.0	0.725
41	12M41DS	75.0	54.0	22.0	33.0	58.0	0.750
42	12M42DS	78.0	54.0	22.0	33.0	58.0	0.750
43	12M43DS	78.0	54.0	22.0	33.0	58.0	0.750
46	12M46DS	83.0	54.0	23.0	35.0	60.0	0.940

## FRACTIONAL BISQUARE



A/F inch	MODEL NO.	D1 inch	D2 inch	T inch	C inch	OAL inch	Wt. lbs.
1.1/4	1220DS	2.440	1.732	0.748	1.047	2.047	1.120
1.5/16	1221DS	2.559	1.732	0.748	1.047	2.047	1.210
1.3/8	1222DS	2.677	1.732	0.787	1.165	2.165	1.340
1.7/16	1223DS	2.755	2.125	0.787	1.165	2.165	1.495
1.1/2	1224DS	2.755	2.125	0.787	1.165	2.165	1.540
1.9/16	1225DS	2.874	2.125	0.787	1.166	2.165	1.595
1.5/8	1226DS	2.952	2.125	0.787	1.283	2.283	1.650
1.11/16	1227DS	3.070	2.125	0.866	1.283	2.283	1.650
1.3/4	1228DS	3.149	2.125	0.866	1.283	2.283	1.760
1.13/16	1229DS	3.267	2.125	0.905	1.362	2.362	2.070
1.7/8	1230DS	3.346	2.125	0.905	1.362	2.362	2.110

## METRIC DEEP BISQUARE

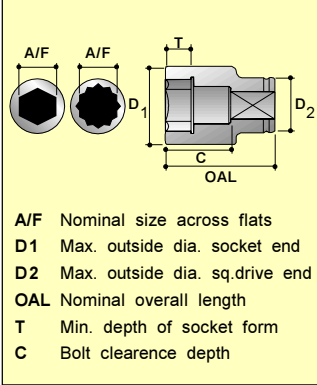


A/F mm	MODEL NO.	D1 mm	D2 mm	T mm	C mm	OAL mm	Wt. Kg.
32	12M32LDS	62.0	44.0	19.0	65.0	90.0	0.910
33	12M33LDS	65.0	44.0	19.0	65.0	90.0	0.940
34	12M34LDS	65.0	44.0	20.0	65.0	90.0	0.950
36	12M36LDS	68.0	44.0	20.0	65.0	90.0	1.010
38	12M38LDS	70.0	54.0	20.0	65.0	90.0	1.100
39	12M39LDS	73.0	54.0	20.0	65.0	90.0	1.125
40	12M40LDS	73.0	54.0	20.0	65.0	90.0	1.125
41	12M41LDS	75.0	54.0	22.0	65.0	90.0	1.150
42	12M42LDS	78.0	54.0	22.0	70.0	95.0	1.150
43	12M43LDS	78.0	54.0	22.0	70.0	95.0	1.150
46	12M46LDS	83.0	54.0	23.0	75.0	100.0	1.340

## FRACTIONAL DEEP BI SQUARE



A/F inch	MODEL NO.	D1 inch	D2 inch	T inch	C inch	OAL inch	Wt. lbs.
1.1/4	1220LDS	2.440	1.732	0.748	2.543	3.543	2.000
1.5/16	1221LDS	2.559	1.732	0.748	2.543	3.543	2.090
1.3/8	1222LDS	2.677	1.732	0.787	2.543	3.543	2.220
1.7/16	1223LDS	2.755	2.125	0.787	2.543	3.543	2.375
1.1/2	1224LDS	2.755	2.125	0.787	2.543	3.543	2.420
1.9/16	1225LDS	2.874	2.125	0.787	2.543	3.543	2.475
1.5/8	1226LDS	2.952	2.125	0.787	2.543	3.543	2.530
1.11/16	1227LDS	3.070	2.125	0.866	2.740	3.740	2.530
1.3/4	1228LDS	3.149	2.125	0.866	2.740	3.740	2.685
1.13/16	1229LDS	3.267	2.125	0.905	2.937	3.937	2.950
1.7/8	1230LDS	3.346	2.125	0.905	2.937	3.937	3.050



# IMPACT SOCKETS THINWALL

3/4"



## METRIC HEXAGON



A/F mm	MODEL NO.	D1 mm	D2 mm	T mm	C mm	OAL mm	Wt. Kg.
17	S-12M17T	27.9	44.0	12.0	20.0	45.0	0.350
19	S-12M19T	30.4	44.0	12.0	20.0	45.0	0.350
21	S-12M21T	32.9	44.0	13.0	23.0	48.0	0.360
22	S-12M22T	34.3	44.0	13.0	23.0	48.0	0.360
23	S-12M23T	35.5	44.0	13.0	23.0	48.0	0.370
24	S-12M24T	36.8	44.0	16.0	23.0	48.0	0.380
26	S-12M26T	38.5	44.0	16.0	23.0	48.0	0.380
27	S-12M27T	40.5	44.0	16.0	23.0	48.0	0.380
28	S-12M28T	41.8	44.0	16.0	23.0	48.0	0.390
30	S-12M30T	44.4	44.0	18.0	27.0	52.0	0.405
32	S-12M32T	46.8	44.0	19.0	27.0	52.0	0.460
33	S-12M33T	48.0	44.0	19.0	30.0	55.0	0.460
34	S-12M34T	49.3	44.0	20.0	30.0	55.0	0.470
36	S-12M36T	51.9	44.0	20.0	31.0	56.0	0.555
38	S-12M38T	54.4	44.0	20.0	34.0	59.0	0.560
41	S-12M41T	58.4	44.0	22.0	34.0	59.0	0.600
42	S-12M42T	59.4	44.0	22.0	34.0	59.0	0.600
43	S-12M43T	60.4	44.0	22.0	39.0	64.0	0.600
46	S-12M46T	64.0	44.0	23.0	39.0	64.0	0.760

## FRACTIONAL HEXAGON



A/F inch	MODEL NO.	D1 inch	D2 inch	T inch	C inch	OAL inch	Wt. lbs.
11/16	S-1211T	1.122	1.732	0.472	0.771	1.771	0.750
3/4	S-1212T	1.196	1.732	0.472	0.771	1.771	0.760
13/16	S-1213T	1.279	1.732	0.511	0.889	1.889	0.770
7/8	S-1214T	1.358	1.732	0.511	0.889	1.889	0.770
15/16	S-1215T	1.448	1.732	0.629	0.889	1.889	0.770
1	S-1216T	1.515	1.732	0.629	0.889	1.889	0.770
1.1/16	S-1217T	1.594	1.732	0.629	0.889	1.889	0.770
1.1/8	S-1218T	1.673	1.732	0.708	0.889	1.889	0.835
1.3/16	S-1219T	1.748	1.732	0.708	1.047	2.047	0.835
1.1/4	S-1220T	1.830	1.732	0.748	1.047	2.047	0.880
1.5/16	S-1221T	1.909	1.732	0.748	1.165	2.165	0.925
1.3/8	S-1222T	1.988	1.732	0.787	1.165	2.165	1.100
1.7/16	S-1223T	2.066	1.732	0.787	1.204	2.204	1.100
1.1/2	S-1224T	2.141	1.732	0.787	1.322	2.322	1.210
1.9/16	S-1225T	2.224	1.732	0.787	1.322	2.322	1.210
1.5/8	S-1226T	2.299	1.732	0.866	1.322	2.322	1.210
1.11/16	S-1227T	2.377	1.732	0.866	1.519	2.519	1.265
1.3/4	S-1228T	2.460	1.732	0.866	1.519	2.519	1.430
1.13/16	S-1229T	2.519	1.732	0.905	1.519	2.519	1.595

## METRIC DEEP HEXAGON

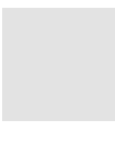
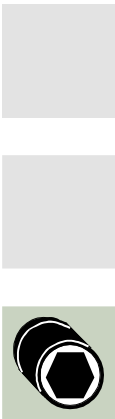


A/F mm	MODEL NO.	D1 mm	D2 mm	T mm	C mm	OAL mm	Wt. Kg.
17	S-12M17LT	27.9	44.0	12.0	50.0	75.0	0.570
19	S-12M19LT	30.4	44.0	12.0	50.0	75.0	0.570
21	S-12M21LT	32.9	44.0	13.0	50.0	75.0	0.590
22	S-12M22LT	34.3	44.0	13.0	65.0	90.0	0.640
23	S-12M23LT	35.5	44.0	13.0	65.0	90.0	0.640
24	S-12M24LT	36.8	44.0	16.0	65.0	90.0	0.670
26	S-12M26LT	38.5	44.0	16.0	65.0	90.0	0.670
27	S-12M27LT	40.5	44.0	16.0	65.0	90.0	0.670
28	S-12M28LT	41.8	44.0	16.0	65.0	90.0	0.670
30	S-12M30LT	44.4	44.0	18.0	65.0	90.0	0.740
32	S-12M32LT	46.8	44.0	19.0	65.0	90.0	0.760
33	S-12M33LT	48.0	44.0	19.0	65.0	90.0	0.760
34	S-12M34LT	49.3	44.0	20.0	65.0	90.0	0.760
36	S-12M36LT	51.9	44.0	20.0	65.0	90.0	0.825
38	S-12M38LT	54.4	44.0	20.0	65.0	90.0	0.850
41	S-12M41LT	58.4	44.0	22.0	65.0	90.0	0.875
42	S-12M42LT	59.4	44.0	22.0	70.0	95.0	1.005
43	S-12M43LT	60.4	44.0	22.0	70.0	95.0	1.050
46	S-12M46LT	64.0	44.0	23.0	75.0	100.0	1.275

## FRACTIONAL DEEP HEXAGON



A/F inch	MODEL NO.	D1 inch	D2 inch	T inch	C inch	OAL inch	Wt. lbs.
11/16	S-1211LT	1.122	1.732	0.472	1.952	2.952	1.210
3/4	S-1212LT	1.196	1.732	0.472	1.952	2.952	1.210
13/16	S-1213LT	1.279	1.732	0.511	1.952	2.952	1.430
7/8	S-1214LT	1.358	1.732	0.511	2.543	3.543	1.540
15/16	S-1215LT	1.448	1.732	0.629	2.543	3.543	1.700
1	S-1216LT	1.515	1.732	0.629	2.543	3.543	1.785
1.1/16	S-1217LT	1.594	1.732	0.629	2.543	3.543	1.785
1.1/8	S-1218LT	1.673	1.732	0.708	2.543	3.543	1.785
1.3/16	S-1219LT	1.748	1.732	0.708	2.543	3.543	1.870
1.1/4	S-1220LT	1.830	1.732	0.748	2.543	3.543	1.980
1.5/16	S-1221LT	1.909	1.732	0.748	2.543	3.543	1.980
1.3/8	S-1222LT	1.988	1.732	0.787	2.543	3.543	2.200
1.7/16	S-1223LT	2.066	1.732	0.787	2.543	3.543	2.530
1.1/2	S-1224LT	2.141	1.732	0.787	2.543	3.543	2.530
1.9/16	S-1225LT	2.224	1.732	0.787	2.543	3.543	2.530
1.5/8	S-1226LT	2.299	1.732	0.866	2.543	3.543	2.530
1.11/16	S-1227LT	2.377	1.732	0.866	2.740	3.740	2.530
1.3/4	S-1228LT	2.460	1.732	0.866	2.937	3.937	2.530
1.13/16	S-1229LT	2.519	1.732	0.905	2.937	3.937	2.530



3/4"

# IMPACT ACCESSORIES



## METRIC HEX DRIVER SOCKETS

HEX A/F mm	MODEL NO.	BIT LENGTH	OAL mm	Wt Kg.
8	12M08H	12.0	62.0	0.240
10	12M10H	18.0	65.0	0.250
12	12M12H	25.0	75.0	0.300
14	12M14H	25.0	75.0	0.300
17	12M17H	35.0	88.0	0.450
19	12M19H	35.0	88.0	0.450
22	12M22H	40.0	93.0	0.500
24	12M24H	45.0	93.0	0.550
27	12M27H	45.0	100.0	0.700

## FRACTIONAL HEX DRIVER SOCKETS

HEX A/F inch	MODEL NO.	BIT LENGTH	OAL inch	Wt lbs.
3/8	1206H	0.708	2.559	0.550
7/16	1207H	0.708	2.559	0.550
1/2	1208H	0.984	2.952	0.660
9/16	1209H	0.984	2.952	0.660
5/8	1210H	1.377	3.464	0.715
3/4	1212H	1.377	3.464	0.990
13/16	1213H	1.574	3.661	1.100
7/8	1214H	1.574	3.661	1.210
1	1216H	1.771	3.937	1.210

## REGULAR EXTENSIONS

OAL mm (inch)	MODEL NO.	SHANK DIA mm (inch)	HEAD DIA mm (inch)	Wt Kg. (lbs.)
75 (3")	E1203	25.0 (0.984)	44.0 (1.732)	0.60 (1.32)
125 (5")	E1205			0.80 (1.76)
175 (7")	E1207			1.00 (2.20)
250 (10")	E1210	25.0 (0.984)	44.0 (1.732)	1.20 (2.64)
330 (13")	E1213			1.50 (3.30)



## SQUARE ADAPTORS

SIZE	MODEL NO.	HEAD DIA mm (inch)	OAL mm (inch)	Wt Kg. (lbs.)
3/4" F X 1/2" M	A1208	44.0 (1.732)	56.0 (2.204)	0.33 (0.72)
3/4" F X 1" M	A1216		65.0 (2.559)	0.45 (0.99)



## UNIVERSAL JOINT

SQUARE DRIVE	MODEL NO.	DIA mm (inch)	OAL mm (inch)	Wt Kg. (lbs.)
3/4"	U1212	44.0 (1.732)	94.0 (3.700)	0.60 (1.32)



## DOUBLE MALE EXTENSIONS

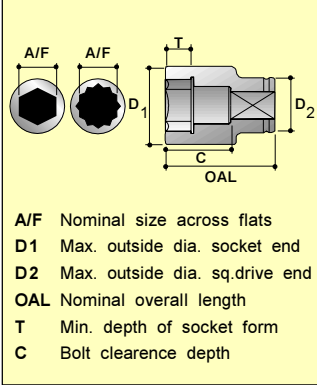
OAL mm (inch)	MODEL NO.	SHANK DIA mm (inch)	HEAD DIA mm (inch)	Wt Kg. (lbs.)
75 (3")	S1203	25.0 (0.984)	19.0 (0.750)	0.40 (0.88)
125 (5")	S1205			0.55 (1.21)
175 (7")	S1207			0.75 (1.65)
250 (10")	S1210	25.0 (0.984)	19.0 (0.750)	0.95 (2.09)
330 (13")	S1213			1.05 (2.31)
410 (16")	S1216			1.60 (3.50)



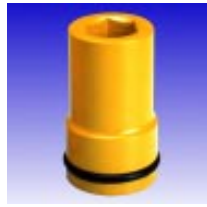
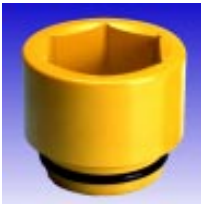
## DOUBLE FEMALE ADAPTORS

SIZE	MODEL NO.	HEAD DIA mm (inch)	OAL mm (inch)	Wt Kg. (lbs.)
3/4" F X 1/2" F	AN1208	44.0 (1.732)	55.0 (2.165)	0.45 (0.99)
3/4" F X 1" F	AN1212		63.0 (2.480)	0.57 (1.25)





# IMPACT SOCKETS



## METRIC HEXAGON

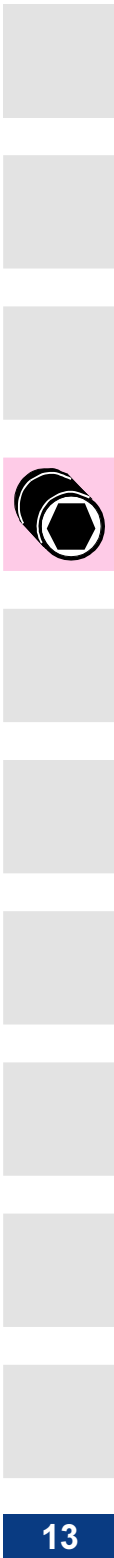


## FRACTIONAL HEXAGON



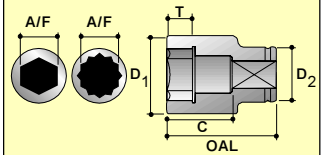
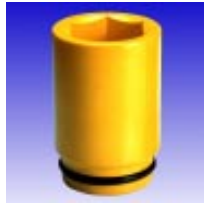
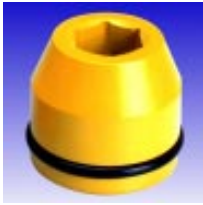
A/F mm	MODEL NO.	D1 mm	D2 mm	T mm	C mm	OAL mm	Wt. Kg.
19	S-16M19	36.0	54.0	14.0	26.0	56.0	0.59
20	S-16M20	36.0	54.0	14.0	26.0	56.0	0.65
21	S-16M21	39.0	54.0	14.0	26.0	56.0	0.65
22	S-16M22	40.0	54.0	14.0	26.0	56.0	0.65
23	S-16M23	40.0	54.0	14.0	26.0	56.0	0.65
24	S-16M24	43.0	54.0	16.0	26.0	56.0	0.65
25	S-16M25	43.0	54.0	16.0	26.0	56.0	0.65
26	S-16M26	46.0	54.0	16.0	26.0	56.0	0.67
27	S-16M27	46.0	54.0	16.0	26.0	56.0	0.70
28	S-16M28	48.0	54.0	16.0	26.0	56.0	0.70
29	S-16M29	50.0	54.0	16.0	28.0	58.0	0.70
30	S-16M30	50.0	54.0	21.0	28.0	58.0	0.70
31	S-16M31	50.0	54.0	21.0	28.0	58.0	0.70
32	S-16M32	52.0	54.0	21.0	28.0	58.0	0.70
33	S-16M33	54.0	54.0	21.0	28.0	58.0	0.70
34	S-16M34	54.0	54.0	21.0	31.0	61.0	0.72
35	S-16M35	57.0	54.0	21.0	31.0	61.0	0.72
36	S-16M36	57.0	54.0	25.0	31.0	61.0	0.77
37	S-16M37	57.0	54.0	25.0	31.0	61.0	0.77
38	S-16M38	60.0	54.0	25.0	35.0	65.0	0.87
39	S-16M39	60.0	54.0	25.0	35.0	65.0	0.90
40	S-16M40	62.0	54.0	25.0	35.0	65.0	0.95
41	S-16M41	64.0	54.0	28.0	35.0	65.0	0.95
42	S-16M42	64.0	54.0	28.0	35.0	65.0	0.95
43	S-16M43	64.0	54.0	28.0	40.0	70.0	1.05
44	S-16M44	70.0	54.0	28.0	40.0	70.0	1.20
45	S-16M45	70.0	54.0	28.0	40.0	70.0	1.20
46	S-16M46	70.0	54.0	28.0	40.0	70.0	1.20
47	S-16M47	72.0	54.0	28.0	40.0	70.0	1.20
48	S-16M48	72.0	54.0	28.0	43.0	73.0	1.20
49	S-16M49	75.0	54.0	28.0	43.0	73.0	1.50
50	S-16M50	75.0	54.0	28.0	43.0	73.0	1.55
51	S-16M51	75.0	54.0	28.0	43.0	73.0	1.50
52	S-16M52	75.0	54.0	28.0	43.0	73.0	1.75
54	S-16M54	81.0	54.0	28.0	47.0	77.0	1.85
55	S-16M55	81.0	54.0	30.0	47.0	77.0	2.20
56	S-16M56	84.0	54.0	30.0	47.0	77.0	2.25
57	S-16M57	84.0	54.0	30.0	47.0	77.0	2.15
58	S-16M58	87.0	54.0	30.0	51.0	81.0	2.35
59	S-16M59	87.0	54.0	30.0	53.0	83.0	2.40
60	S-16M60	87.0	54.0	32.0	53.0	83.0	2.40
62	S-16M62	90.0	54.0	32.0	56.0	86.0	2.75
65	S-16M65	93.0	54.0	38.0	56.0	86.0	3.13
70	S-16M70	99.0	54.0	40.0	63.0	93.0	3.70
75	S-16M75	106.0	86.0	42.0	66.0	96.0	4.50
80	S-16M80	112.0	86.0	44.0	68.0	98.0	4.95
85	S-16M85	119.0	86.0	47.0	68.0	98.0	5.25
90	S-16M90	125.0	86.0	50.0	75.0	105.0	6.20
95	S-16M95	131.0	86.0	54.0	77.0	107.0	6.30
100	S-16M100	135.0	86.0	54.0	83.0	113.0	6.50
105	S-16M105	144.0	127.0	57.0	83.0	113.0	6.60
110	S-16M110	148.0	127.0	59.0	93.0	123.0	6.85
115	S-16M115	155.0	127.0	59.0	93.0	123.0	6.98

A/F inch	MODEL NO.	D1 inch	D2 inch	T inch	C inch	OAL inch	Wt. lbs.
3/4	S-1612	1.417	2.125	0.551	1.023	2.204	1.30
13/16	S-1613	1.535	2.125	0.551	1.023	2.204	1.43
7/8	S-1614	1.574	2.125	0.551	1.023	2.204	1.43
15/16	S-1615	1.692	2.125	0.629	1.023	2.204	1.43
1	S-1616	1.692	2.125	0.629	1.023	2.204	1.43
1.1/16	S-1617	1.811	2.125	0.629	1.023	2.204	1.54
1.1/8	S-1618	1.889	2.125	0.629	1.023	2.204	1.54
1.3/16	S-1619	1.968	2.125	0.826	1.141	2.283	1.54
1.1/4	S-1620	2.047	2.125	0.826	1.141	2.283	1.54
1.5/16	S-1621	2.125	2.125	0.826	1.141	2.283	1.54
1.3/8	S-1622	2.244	2.125	0.826	1.220	2.401	1.59
1.7/16	S-1623	2.244	2.125	0.984	1.220	2.401	1.95
1.1/2	S-1624	2.362	2.125	0.984	1.377	2.559	1.92
1.9/16	S-1625	2.440	2.125	0.984	1.377	2.559	2.09
1.5/8	S-1626	2.519	2.125	1.102	1.377	2.559	2.09
1.11/16	S-1627	2.519	2.125	1.102	1.574	2.755	2.31
1.3/4	S-1628	2.755	2.125	1.102	1.574	2.755	2.64
1.13/16	S-1629	2.755	2.125	1.102	1.574	2.755	2.64
1.7/8	S-1630	2.834	2.125	1.102	1.574	2.755	2.64
1.15/16	S-1631	2.952	2.125	1.102	1.692	2.874	3.33
2	S-1632	2.952	2.125	1.102	1.692	2.874	3.33
2.1/16	S-1633	3.188	2.125	1.102	1.692	2.874	4.07
2.1/8	S-1634	3.186	2.125	1.102	1.850	3.031	4.07
2.3/16	S-1635	3.188	2.125	1.181	1.850	3.031	4.84
2.1/4	S-1636	3.307	2.125	1.181	2.007	3.188	4.73
2.5/16	S-1637	3.425	2.125	1.181	2.086	3.267	5.28
2.3/8	S-1638	3.543	2.125	1.259	2.086	3.267	5.28
2.7/16	S-1639	3.543	2.125	1.259	2.204	3.385	6.05
2.1/2	S-1640	3.661	2.125	1.259	2.204	3.385	6.66
2.9/16	S-1641	3.661	2.125	1.496	2.204	3.385	6.90
2.5/8	S-1642	3.779	2.125	1.496	2.362	3.661	8.25
2.11/16	S-1643	3.779	2.125	1.496	2.362	3.661	8.25
2.3/4	S-1644	3.897	2.125	1.574	2.362	3.661	8.25
2.13/16	S-1645	4.055	2.125	1.574	2.362	3.661	9.35
2.7/8	S-1646	4.055	3.386	1.574	2.362	3.661	9.35
2.15/16	S-1647	4.173	3.386	1.653	2.677	3.858	9.90
3	S-1648	4.173	3.386	1.653	2.677	3.858	10.12
3.1/16	S-1649	4.291	3.386	1.653	2.677	3.858	10.34
3.1/8	S-1650	4.291	3.386	1.653	2.677	3.858	10.45
3.3/16	S-1651	4.409	3.386	1.753	2.677	3.858	10.89
3.1/4	S-1652	4.409	3.386	1.753	2.677	3.858	11.22
3.5/16	S-1653	4.409	3.386	1.753	2.677	3.858	11.55
3.3/8	S-1654	4.685	3.386	1.753	2.952	4.133	11.66
3.7/16	S-1655	4.685	3.386	1.850	2.952	4.133	11.77
3.1/2	S-1656	4.921	3.386	1.850	2.952	4.133	13.64
3.5/8	S-1658	4.921	3.386	1.968	2.952	4.133	13.86
3.3/4	S-1660	5.157	3.386	2.125	3.070	4.212	14.08
3.7/8	S-1662	5.314	3.386	2.125	3.070	4.212	14.19
4	S-1664	5.511	3.386	2.125	3.267	4.448	14.52
4.1/8	S-1666	5.669	5.000	2.244	3.267	4.448	14.52
4.1/4	S-1668	5.826	5.000	2.244	3.267	4.448	14.74
4.3/8	S-1670	5.984	5.000	2.322	3.661	4.842	15.07
4.1/2	S-1672	6.102	5.000	2.322	3.661	4.842	15.18





# IMPACT SOCKETS



A/F Nominal size across flats  
 D1 Max. outside dia. socket end  
 D2 Max. outside dia. sq. drive end  
 OAL Nominal overall length  
 T Min. depth of socket form  
 C Bolt clearance depth

## METRIC DEEP HEXAGON



## FRACTIONAL DEEP HEXAGON

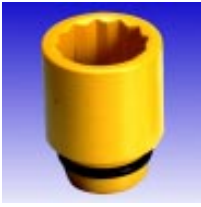


A/F mm	MODEL NO.	D1 mm	D2 mm	T mm	C mm	OAL mm	Wt. Kg.
19	S-16M19L	36.0	54.0	14.0	80.0	110.0	1.00
20	S-16M20L	36.0	54.0	14.0	80.0	110.0	1.00
21	S-16M21L	39.0	54.0	14.0	80.0	110.0	1.00
22	S-16M22L	40.0	54.0	14.0	80.0	110.0	1.10
23	S-16M23L	40.0	54.0	14.0	80.0	110.0	1.10
24	S-16M24L	43.0	54.0	16.0	80.0	110.0	1.10
25	S-16M25L	43.0	54.0	16.0	80.0	110.0	1.15
26	S-16M26L	46.0	54.0	16.0	80.0	110.0	1.15
27	S-16M27L	46.0	54.0	16.0	80.0	110.0	1.20
28	S-16M28L	48.0	54.0	16.0	80.0	110.0	1.20
29	S-16M29L	50.0	54.0	16.0	80.0	110.0	1.20
30	S-16M30L	50.0	54.0	21.0	80.0	110.0	1.27
31	S-16M31L	50.0	54.0	21.0	80.0	110.0	1.27
32	S-16M32L	52.0	54.0	21.0	80.0	110.0	1.30
33	S-16M33L	54.0	54.0	21.0	80.0	110.0	1.37
34	S-16M34L	54.0	54.0	21.0	80.0	110.0	1.35
35	S-16M35L	57.0	54.0	21.0	80.0	110.0	1.35
36	S-16M36L	57.0	54.0	25.0	80.0	110.0	1.35
37	S-16M37L	57.0	54.0	25.0	80.0	110.0	1.50
38	S-16M38L	60.0	54.0	25.0	80.0	110.0	1.55
39	S-16M39L	60.0	54.0	25.0	80.0	110.0	1.65
40	S-16M40L	62.0	54.0	25.0	80.0	110.0	1.65
41	S-16M41L	64.0	54.0	28.0	80.0	110.0	1.65
42	S-16M42L	64.0	54.0	28.0	80.0	110.0	1.70
43	S-16M43L	64.0	54.0	28.0	80.0	110.0	1.75
44	S-16M44L	70.0	54.0	28.0	80.0	110.0	1.75
45	S-16M45L	70.0	54.0	28.0	80.0	110.0	1.75
46	S-16M46L	70.0	54.0	28.0	80.0	110.0	2.20
47	S-16M47L	72.0	54.0	28.0	80.0	110.0	2.20
48	S-16M48L	72.0	54.0	28.0	80.0	110.0	2.20
49	S-16M49L	75.0	54.0	28.0	80.0	110.0	2.35
50	S-16M50L	75.0	54.0	28.0	80.0	110.0	2.35
51	S-16M51L	75.0	54.0	28.0	80.0	110.0	2.35
52	S-16M52L	75.0	54.0	28.0	80.0	110.0	2.50
54	S-16M54L	81.0	54.0	28.0	80.0	110.0	2.70
55	S-16M55L	81.0	54.0	30.0	80.0	110.0	2.85
56	S-16M56L	84.0	54.0	30.0	80.0	110.0	2.85
57	S-16M57L	84.0	54.0	30.0	80.0	110.0	2.85
58	S-16M58L	87.0	54.0	30.0	80.0	110.0	2.85
59	S-16M59L	87.0	54.0	30.0	100.0	130.0	3.55
60	S-16M60L	87.0	54.0	32.0	100.0	130.0	3.55
62	S-16M62L	90.0	54.0	32.0	100.0	130.0	4.00
65	S-16M65L	93.0	54.0	38.0	100.0	130.0	4.55
70	S-16M70L	99.0	54.0	40.0	100.0	130.0	4.85
75	S-16M75L	106.0	86.0	42.0	100.0	130.0	5.00
80	S-16M80L	112.0	86.0	44.0	110.0	140.0	6.60
85	S-16M85L	119.0	86.0	47.0	110.0	140.0	6.70
90	S-16M90L	125.0	86.0	50.0	110.0	140.0	6.70
95	S-16M95L	131.0	86.0	54.0	110.0	140.0	6.85
100	S-16M100L	135.0	86.0	54.0	115.0	145.0	7.50
105	S-16M105L	144.0	127.0	57.0	115.0	145.0	7.70
110	S-16M110L	148.0	127.0	59.0	120.0	150.0	8.25
115	S-16M115L	155.0	127.0	59.0	120.0	150.0	8.25

A/F inch	MODEL NO.	D1 inch	D2 inch	T inch	C inch	OAL inch	Wt. lbs.
3/4	S-1612L	1.417	2.125	0.551	3.149	4.330	2.20
13/16	S-1613L	1.535	2.125	0.551	3.149	4.330	2.20
7/8	S-1614L	1.574	2.125	0.551	3.149	4.330	2.42
15/16	S-1615L	1.692	2.125	0.629	3.149	4.330	2.42
1	S-1616L	1.692	2.125	0.629	3.149	4.330	2.53
1.1/16	S-1617L	1.811	2.125	0.629	3.149	4.330	2.64
1.1/8	S-1618L	1.889	2.125	0.629	3.149	4.330	2.64
1.3/16	S-1619L	1.968	2.125	0.826	3.149	4.330	2.81
1.1/4	S-1620L	2.047	2.125	0.826	3.149	4.330	2.86
1.5/16	S-1621L	2.125	2.125	0.826	3.149	4.330	3.02
1.3/8	S-1622L	2.244	2.125	0.826	3.149	4.330	2.97
1.7/16	S-1623L	2.244	2.125	0.984	3.149	4.330	3.33
1.1/2	S-1624L	2.362	2.125	0.984	3.149	4.330	3.41
1.9/16	S-1625L	2.440	2.125	0.984	3.149	4.330	3.63
1.5/8	S-1626L	2.519	2.125	1.102	3.149	4.330	3.63
1.11/16	S-1627L	2.519	2.125	1.102	3.149	4.330	3.85
1.3/4	S-1628L	2.755	2.125	1.102	3.149	4.330	3.85
1.13/16	S-1629L	2.755	2.125	1.102	3.149	4.330	4.84
1.7/8	S-1630L	2.834	2.125	1.102	3.149	4.330	4.84
1.15/16	S-1631L	2.952	2.125	1.102	3.149	4.330	5.17
2	S-1632L	2.952	2.125	1.102	3.149	4.330	5.17
2.1/16	S-1633L	3.188	2.125	1.102	3.149	4.330	5.50
2.1/8	S-1634L	3.186	2.125	1.102	3.149	4.330	5.94
2.3/16	S-1635L	3.188	2.125	1.181	3.149	4.330	6.27
2.1/4	S-1636L	3.307	2.125	1.181	3.149	4.330	6.27
2.5/16	S-1637L	3.425	2.125	1.181	3.149	4.330	6.27
2.3/8	S-1638L	3.543	2.125	1.259	3.937	5.118	7.81
2.7/16	S-1639L	3.543	2.125	1.259	3.937	5.118	8.80
2.1/2	S-1640L	3.661	2.125	1.259	3.937	5.118	9.24
2.9/16	S-1641L	3.661	2.125	1.496	3.937	5.118	9.24
2.5/8	S-1642L	3.779	2.125	1.496	3.937	5.118	10.00
2.11/16	S-1643L	3.779	2.125	1.496	3.937	5.118	10.00
2.3/4	S-1644L	3.897	2.125	1.574	3.937	5.118	10.67
2.13/16	S-1645L	4.055	2.125	1.574	3.937	5.118	10.60
2.7/8	S-1646L	4.055	3.386	1.574	3.937	5.118	11.00
2.15/16	S-1647L	4.173	3.386	1.653	3.937	5.118	11.00
3	S-1648L	4.173	3.386	1.653	3.937	5.118	11.00
3.1/16	S-1649L	4.291	3.386	1.653	3.967	5.118	13.86
3.1/8	S-1650L	4.291	3.386	1.653	4.330	5.511	14.52
3.3/16	S-1651L	4.409	3.386	1.732	4.330	5.511	14.52
3.1/4	S-1652L	4.409	3.386	1.732	4.330	5.511	14.52
3.5/16	S-1653L	4.409	3.386	1.732	4.330	5.511	14.52
3.3/8	S-1654L	4.685	3.386	1.850	4.330	5.511	14.52
3.7/16	S-1655L	4.685	3.386	1.850	4.330	5.511	14.96
3.1/2	S-1656L	4.921	3.386	1.850	4.330	5.511	15.07
3.5/8	S-1658L	4.921	3.386	1.968	4.330	5.511	15.07
3.3/4	S-1660L	5.157	3.386	2.125	4.330	5.511	15.18
3.7/8	S-1662L	5.314	3.386	2.125	4.527	5.708	15.84
4	S-1664L	5.511	3.386	2.125	4.527	5.708	16.94
4.1/8	S-1666L	5.669	5.000	2.244	4.527	5.708	16.94
4.1/4	S-1668L	5.826	5.000	2.244	4.724	5.905	17.60
4.3/8	S-1670L	5.984	5.000	2.322	4.724	5.905	18.15
4.1/2	S-1672L	6.102	5.000	2.322	4.724	5.905	18.15

# IMPACT SOCKETS

1"



## METRIC BIHEXAGON



A/F mm	MODEL NO.	D1 mm	D2 mm	T mm	C mm	OAL mm	Wt. Kg.
19	16M19DH	36.0	54.0	14.0	26.0	56.0	0.59
20	16M20DH	36.0	54.0	14.0	26.0	56.0	0.65
21	16M21DH	39.0	54.0	14.0	26.0	56.0	0.65
22	16M22DH	40.0	54.0	14.0	26.0	56.0	0.65
23	16M23DH	40.0	54.0	14.0	26.0	56.0	0.65
24	16M24DH	43.0	54.0	16.0	26.0	56.0	0.65
25	16M25DH	43.0	54.0	16.0	26.0	56.0	0.65
26	16M26DH	46.0	54.0	16.0	26.0	56.0	0.67
27	16M27DH	46.0	54.0	16.0	26.0	56.0	0.70
28	16M28DH	48.0	54.0	16.0	26.0	56.0	0.70
29	16M29DH	50.0	54.0	16.0	28.0	58.0	0.70
30	16M30DH	50.0	54.0	21.0	28.0	58.0	0.70
31	16M31DH	50.0	54.0	21.0	28.0	58.0	0.70
32	16M32DH	52.0	54.0	21.0	28.0	58.0	0.70
33	16M33DH	54.0	54.0	21.0	28.0	58.0	0.70
34	16M34DH	54.0	54.0	21.0	31.0	61.0	0.72
35	16M35DH	57.0	54.0	21.0	31.0	61.0	0.72
36	16M36DH	57.0	54.0	25.0	31.0	61.0	0.77
37	16M37DH	57.0	54.0	25.0	31.0	61.0	0.77
38	16M38DH	60.0	54.0	25.0	35.0	65.0	0.87
39	16M39DH	60.0	54.0	25.0	35.0	65.0	0.90
40	16M40DH	62.0	54.0	25.0	35.0	65.0	0.95
41	16M41DH	64.0	54.0	28.0	35.0	65.0	0.95
42	16M42DH	64.0	54.0	28.0	35.0	65.0	0.95
43	16M43DH	64.0	54.0	28.0	40.0	70.0	1.05
44	16M44DH	70.0	54.0	28.0	40.0	70.0	1.20
45	16M45DH	70.0	54.0	28.0	40.0	70.0	1.20
46	16M46DH	70.0	54.0	28.0	40.0	70.0	1.20
47	16M47DH	72.0	54.0	28.0	40.0	70.0	1.20
48	16M48DH	72.0	54.0	28.0	43.0	73.0	1.20
49	16M49DH	75.0	54.0	28.0	43.0	73.0	1.50
50	16M50DH	75.0	54.0	28.0	43.0	73.0	1.55
51	16M51DH	75.0	54.0	28.0	43.0	73.0	1.50
52	16M52DH	75.0	54.0	28.0	43.0	73.0	1.75
54	16M54DH	81.0	54.0	28.0	47.0	77.0	1.85
55	16M55DH	81.0	54.0	30.0	47.0	77.0	2.20
56	16M56DH	84.0	54.0	30.0	47.0	77.0	2.25
57	16M57DH	84.0	54.0	30.0	47.0	77.0	2.15
58	16M58DH	87.0	54.0	30.0	51.0	81.0	2.35
59	16M59DH	87.0	54.0	30.0	53.0	83.0	2.40
60	16M60DH	87.0	54.0	32.0	53.0	83.0	2.40
62	16M62DH	90.0	54.0	32.0	56.0	86.0	2.75
65	16M65DH	93.0	54.0	38.0	56.0	86.0	3.13
70	16M70DH	99.0	54.0	40.0	63.0	93.0	3.70
75	16M75DH	106.0	86.0	42.0	66.0	96.0	4.50
80	16M80DH	112.0	86.0	44.0	68.0	98.0	4.95
85	16M85DH	119.0	86.0	47.0	68.0	98.0	5.25
90	16M90DH	125.0	86.0	50.0	75.0	105.0	6.20
95	16M95DH	131.0	86.0	54.0	77.0	107.0	6.30

## FRACTIONAL BIHEXAGON

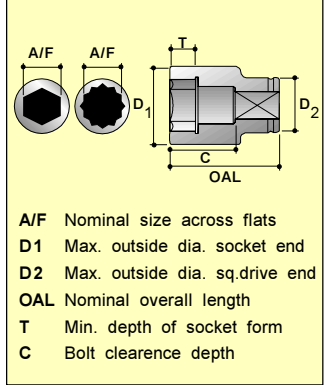
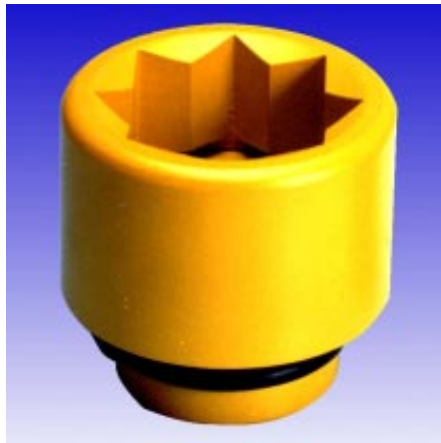


A/F inch	MODEL NO.	D1 inch	D2 inch	T inch	C inch	OAL inch	Wt. lbs.
3/4	1612DH	1.417	2.125	0.551	1.023	2.204	1.30
13/16	1613DH	1.535	2.125	0.551	1.023	2.204	1.43
7/8	1614DH	1.574	2.125	0.551	1.023	2.204	1.43
15/16	1615DH	1.692	2.125	0.629	1.023	2.204	1.43
1	1616DH	1.692	2.125	0.629	1.023	2.204	1.43
1.1/16	1617DH	1.811	2.125	0.629	1.023	2.204	1.54
1.1/8	1618DH	1.889	2.125	0.629	1.023	2.204	1.54
1.3/16	1619DH	1.968	2.125	0.826	1.141	2.283	1.54
1.1/4	1620DH	2.047	2.125	0.826	1.141	2.283	1.54
1.5/16	1621DH	2.125	2.125	0.826	1.141	2.283	1.54
1.3/8	1622DH	2.244	2.125	0.826	1.220	2.401	1.59
1.7/16	1623DH	2.244	2.125	0.984	1.220	2.401	1.95
1.1/2	1624DH	2.362	2.125	0.984	1.377	2.559	1.92
1.9/16	1625DH	2.440	2.125	0.984	1.377	2.559	2.09
1.5/8	1626DH	2.519	2.125	1.102	1.377	2.559	2.09
1.11/16	1627DH	2.519	2.125	1.102	1.574	2.755	2.31
1.3/4	1628DH	2.755	2.125	1.102	1.574	2.755	2.64
1.13/16	1629DH	2.755	2.125	1.102	1.574	2.755	2.64
1.7/8	1630DH	2.834	2.125	1.102	1.574	2.755	2.64
1.15/16	1631DH	2.952	2.125	1.102	1.692	2.874	3.33
2	1632DH	2.952	2.125	1.102	1.692	2.874	3.33
2.1/16	1633DH	3.188	2.125	1.102	1.692	2.874	4.07
2.1/8	1634DH	3.186	2.125	1.102	1.850	3.031	4.07
2.3/16	1635DH	3.188	2.125	1.181	1.850	3.031	4.84
2.1/4	1636DH	3.307	2.125	1.181	2.007	3.188	4.73
2.5/16	1637DH	3.425	2.125	1.181	2.088	3.267	5.28
2.3/8	1638DH	3.543	2.125	1.259	2.088	3.267	5.28
2.7/16	1639DH	3.543	2.125	1.259	2.204	3.385	6.05
2.1/2	1640DH	3.661	2.125	1.259	2.204	3.385	6.66
2.9/16	1641DH	3.661	2.125	1.496	2.204	3.385	6.90
2.5/8	1642DH	3.779	2.125	1.496	2.362	3.661	8.25
2.11/16	1643DH	3.779	2.125	1.496	2.362	3.661	8.25
2.3/4	1644DH	3.897	2.125	1.574	2.362	3.661	8.25
2.13/16	1645DH	4.055	2.125	1.574	2.362	3.661	9.35
2.7/8	1646DH	4.055	3.386	1.574	2.362	3.661	9.35
2.15/16	1647DH	4.173	3.386	1.653	2.677	3.858	9.90
3	1648DH	4.173	3.386	1.653	2.677	3.858	10.12
3.1/16	1649DH	4.291	3.386	1.653	2.677	3.858	10.34
3.1/8	1650DH	4.291	3.386	1.653	2.677	3.858	10.45
3.3/16	1651DH	4.409	3.386	1.753	2.677	3.858	10.89
3.1/4	1652DH	4.409	3.386	1.753	2.677	3.858	11.22
3.5/16	1653DH	4.409	3.386	1.753	2.677	3.858	11.55
3.3/8	1654DH	4.685	3.386	1.753	2.952	4.133	11.66
3.7/16	1655DH	4.685	3.386	1.850	2.952	4.133	11.77
3.1/2	1656DH	4.921	3.386	1.850	2.952	4.133	13.64
3.5/8	1658DH	4.921	3.386	1.968	2.952	4.133	13.86
3.3/4	1660DH	5.157	3.386	2.125	3.070	4.212	14.08
3.7/8	1662DH	5.314	3.386	2.125	3.070	4.212	14.19





# IMPACT SOCKETS



## METRIC BISQUARE



A/F mm	MODEL NO.	D1 mm	D2 mm	T mm	C mm	OAL mm	Wt. Kg.
32	16M32DS	65.0	54.0	21.0	28.0	58.0	0.86
33	16M33DS	65.0	54.0	21.0	28.0	58.0	0.86
34	16M34DS	68.0	54.0	21.0	31.0	61.0	0.90
35	16M35DS	68.0	54.0	21.0	31.0	61.0	0.90
36	16M36DS	71.0	54.0	25.0	31.0	61.0	0.92
38	16M38DS	74.0	54.0	25.0	35.0	65.0	1.15
39	16M39DS	74.0	54.0	25.0	35.0	65.0	1.15
40	16M40DS	77.0	54.0	25.0	35.0	65.0	1.16
41	16M41DS	77.0	54.0	28.0	35.0	65.0	1.16
42	16M42DS	80.0	54.0	28.0	35.0	65.0	1.36
43	16M43DS	80.0	54.0	28.0	40.0	70.0	1.46
46	16M46DS	86.0	54.0	28.0	40.0	70.0	1.50
50	16M50DS	90.0	54.0	28.0	43.0	73.0	1.70
51	16M51DS	93.0	54.0	28.0	43.0	73.0	1.80
54	16M54DS	98.0	54.0	28.0	47.0	77.0	2.25
55	16M55DS	98.0	54.0	30.0	47.0	77.0	2.25
57	16M57DS	103.0	86.0	30.0	47.0	77.0	2.95
60	16M60DS	106.0	86.0	32.0	53.0	83.0	3.20
65	16M65DS	112.0	86.0	38.0	56.0	86.0	3.65

## FRACTIONAL BISQUARE



A/F inch	MODEL NO.	D1 inch	D2 inch	T inch	C inch	OAL inch	Wt. lbs.
1.1/4	1620DS	2.559	2.125	0.826	1.141	2.283	1.89
1.5/16	1621DS	2.559	2.125	0.826	1.141	2.283	1.89
1.3/8	1622DS	2.677	2.125	0.826	1.220	2.401	1.98
1.7/16	1623DS	2.795	2.125	0.984	1.220	2.401	2.02
1.1/2	1624DS	2.913	2.125	0.984	1.377	2.559	2.53
1.9/16	1625DS	2.834	2.125	0.984	1.377	2.559	2.55
1.5/8	1626DS	3.031	2.125	1.102	1.377	2.559	2.55
1.11/16	1627DS	3.149	2.125	1.102	1.574	2.755	3.30
1.3/4	1628DS	3.267	2.125	1.102	1.574	2.755	3.30
1.13/16	1629DS	3.385	2.125	1.102	1.574	2.755	3.52
1.7/8	1630DS	3.503	2.125	1.102	1.574	2.755	3.52
2	1632DS	3.661	2.125	1.102	1.692	2.874	3.96
2.1/16	1633DS	3.779	2.125	1.102	1.692	2.874	4.95
2.1/8	1634DS	3.779	2.125	1.102	1.850	3.031	4.95
2.3/16	1635DS	3.937	2.125	1.181	1.850	3.031	6.49
2.1/4	1636DS	4.055	3.385	1.181	2.007	3.188	6.49
2.3/8	1638DS	4.173	3.385	1.259	2.086	3.267	7.04
2.1/2	1640DS	4.409	3.385	1.259	2.204	3.385	8.47

## METRIC DEEP BISQUARE



A/F mm	MODEL NO.	D1 mm	D2 mm	T mm	C mm	OAL mm	Wt. Kg.
32	16M32LDS	65.0	54.0	21.0	80.0	110.0	1.46
33	16M33LDS	65.0	54.0	21.0	80.0	110.0	1.46
34	16M34LDS	68.0	54.0	21.0	80.0	110.0	1.50
35	16M35LDS	68.0	54.0	21.0	80.0	110.0	1.50
36	16M36LDS	71.0	54.0	25.0	80.0	110.0	1.52
38	16M38LDS	74.0	54.0	25.0	80.0	110.0	1.75
39	16M39LDS	74.0	54.0	25.0	80.0	110.0	1.75
40	16M40LDS	77.0	54.0	25.0	80.0	110.0	1.76
41	16M41LDS	77.0	54.0	28.0	80.0	110.0	1.76
42	16M42LDS	80.0	54.0	28.0	80.0	110.0	1.96
43	16M43LDS	80.0	54.0	28.0	80.0	110.0	2.16
46	16M46LDS	86.0	54.0	28.0	80.0	110.0	2.30
50	16M50LDS	90.0	54.0	28.0	80.0	110.0	2.50
51	16M51LDS	93.0	54.0	28.0	80.0	110.0	2.60
54	16M54LDS	98.0	54.0	28.0	80.0	110.0	2.95
55	16M55LDS	98.0	54.0	30.0	80.0	110.0	2.95
57	16M57LDS	103.0	86.0	30.0	80.0	110.0	3.65
60	16M60LDS	106.0	86.0	32.0	100.0	130.0	4.00
65	16M65LDS	112.0	86.0	38.0	100.0	130.0	4.55

## FRACTIONAL DEEP BISQUARE



A/F inch	MODEL NO.	D1 inch	D2 inch	T inch	C inch	OAL inch	Wt. lbs.
1.1/4	1620LDS	2.559	2.125	0.826	3.149	4.330	3.21
1.5/16	1621LDS	2.559	2.125	0.826	3.149	4.330	3.21
1.3/8	1622LDS	2.677	2.125	0.826	3.149	4.330	3.30
1.7/16	1623LDS	2.795	2.125	0.984	3.149	4.330	3.34
1.1/2	1624LDS	2.913	2.125	0.984	3.149	4.330	3.85
1.9/16	1625LDS	2.834	2.125	0.984	3.149	4.330	3.87
1.5/8	1626LDS	3.031	2.125	1.102	3.149	4.330	3.87
1.11/16	1627LDS	3.149	2.125	1.102	3.149	4.330	4.75
1.3/4	1628LDS	3.267	2.125	1.102	3.149	4.330	4.84
1.13/16	1629LDS	3.385	2.125	1.102	3.149	4.330	5.06
1.7/8	1630LDS	3.503	2.125	1.102	3.149	4.330	5.28
2	1632LDS	3.661	2.125	1.102	3.149	4.330	5.72
2.1/16	1633LDS	3.779	2.125	1.102	3.149	4.330	6.49
2.1/8	1634LDS	3.779	2.125	1.102	3.149	4.330	6.49
2.3/16	1635LDS	3.937	2.125	1.181	3.149	4.330	8.03
2.1/4	1636LDS	4.055	3.385	1.181	3.149	4.330	8.03
2.3/8	1638LDS	4.173	3.385	1.259	3.937	5.118	8.80
2.1/2	1640LDS	4.409	3.385	1.259	3.937	5.118	10.01

# IMPACT SOCKETS THINWALL



## METRIC HEXAGON



A/F mm	MODEL NO.	D1 mm	D2 mm	T mm	C mm	OAL mm	Wt. Kg.
22	S-16M22T	35.6	54.0	14.0	21.0	51.0	0.60
23	S-16M23T	37.0	54.0	14.0	21.0	51.0	0.60
24	S-16M24T	38.3	54.0	16.0	26.0	56.0	0.60
25	S-16M25T	39.5	54.0	16.0	26.0	56.0	0.60
26	S-16M26T	40.8	54.0	16.0	26.0	56.0	0.62
27	S-16M27T	42.0	54.0	16.0	26.0	56.0	0.65
28	S-16M28T	43.3	54.0	16.0	26.0	56.0	0.65
29	S-16M29T	44.5	54.0	16.0	29.0	58.0	0.65
30	S-16M30T	45.9	54.0	21.0	29.0	58.0	0.65
31	S-16M31T	47.0	54.0	21.0	29.0	58.0	0.65
32	S-16M32T	48.3	54.0	21.0	29.0	58.0	0.65
33	S-16M33T	49.5	54.0	21.0	29.0	58.0	0.65
34	S-16M34T	50.8	54.0	21.0	31.0	61.0	0.67
35	S-16M35T	52.0	54.0	21.0	31.0	61.0	0.67
36	S-16M36T	53.4	54.0	25.0	31.0	61.0	0.72
37	S-16M37T	54.0	54.0	25.0	31.0	61.0	0.72
38	S-16M38T	55.9	54.0	25.0	35.0	65.0	0.87
39	S-16M39T	57.1	54.0	25.0	35.0	65.0	0.90
40	S-16M40T	58.1	54.0	25.0	35.0	65.0	0.90
41	S-16M41T	59.9	54.0	28.0	35.0	65.0	0.90
42	S-16M42T	60.9	54.0	28.0	35.0	65.0	0.90
43	S-16M43T	61.9	54.0	28.0	40.0	70.0	1.00
44	S-16M44T	63.4	54.0	28.0	40.0	70.0	1.15
45	S-16M45T	64.6	54.0	28.0	40.0	70.0	1.15
46	S-16M46T	65.9	54.0	28.0	40.0	70.0	1.15

## FRACTIONAL HEXAGON



A/F inch	MODEL NO.	D1 inch	D2 inch	T inch	C inch	OAL inch	Wt. lbs.
7/8	S-1614T	1.417	2.125	0.629	1.023	2.204	1.12
15/16	S-1615T	1.507	2.125	0.629	1.023	2.204	1.12
1	S-1616T	1.574	2.125	0.629	1.023	2.204	1.12
1.1/16	S-1617T	1.653	2.125	0.629	1.023	2.204	1.43
1.1/8	S-1618T	1.728	2.125	0.629	1.023	2.204	1.43
1.3/16	S-1619T	1.807	2.125	0.826	1.141	2.285	1.43
1.1/4	S-1620T	1.889	2.125	0.826	1.141	2.285	1.43
1.5/16	S-1621T	1.968	2.125	0.826	1.141	2.285	1.43
1.3/8	S-1622T	2.047	2.125	0.826	1.220	2.401	1.48
1.7/16	S-1623T	2.125	2.125	0.984	1.220	2.401	1.84
1.1/2	S-1624T	2.200	2.125	0.984	1.377	2.559	1.81
1.9/16	S-1625T	2.283	2.125	0.984	1.377	2.559	2.00
1.5/8	S-1626T	2.358	2.125	1.102	1.377	2.559	2.00
1.11/16	S-1627T	2.437	2.125	1.102	1.574	2.755	2.20
1.3/4	S-1628T	2.519	2.125	1.102	1.574	2.755	2.53
1.13/16	S-1629T	2.594	2.125	1.102	1.574	2.755	2.53



## METRIC DEEP HEXAGON

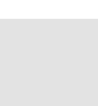
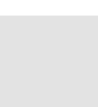
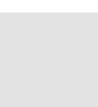
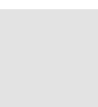
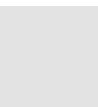
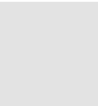


A/F mm	MODEL NO.	D1 mm	D2 mm	T mm	C mm	OAL mm	Wt. Kg.
22	S-16M22LT	35.6	54.0	14.0	80.0	110.0	1.05
23	S-16M23LT	37.0	54.0	14.0	80.0	110.0	1.05
24	S-16M24LT	38.3	54.0	16.0	80.0	110.0	1.05
25	S-16M25LT	39.5	54.0	16.0	80.0	110.0	1.10
26	S-16M26LT	40.8	54.0	16.0	80.0	110.0	1.10
27	S-16M27LT	42.0	54.0	16.0	80.0	110.0	1.10
28	S-16M28LT	43.3	54.0	16.0	80.0	110.0	1.15
29	S-16M29LT	44.5	54.0	16.0	80.0	110.0	1.15
30	S-16M30LT	45.9	54.0	21.0	80.0	110.0	1.22
31	S-16M31LT	47.0	54.0	21.0	80.0	110.0	1.21
32	S-16M32LT	48.3	54.0	21.0	80.0	110.0	1.25
33	S-16M33LT	49.5	54.0	21.0	80.0	110.0	1.27
34	S-16M34LT	50.8	54.0	21.0	80.0	110.0	1.30
35	S-16M35LT	52.0	54.0	21.0	80.0	110.0	1.30
36	S-16M36LT	53.4	54.0	25.0	80.0	110.0	1.30
37	S-16M37LT	54.0	54.0	25.0	80.0	110.0	1.45
38	S-16M38LT	55.9	54.0	25.0	80.0	110.0	1.50
39	S-16M39LT	57.1	54.0	25.0	80.0	110.0	1.60
40	S-16M40LT	58.1	54.0	25.0	80.0	110.0	1.60
41	S-16M41LT	59.9	54.0	28.0	80.0	110.0	1.60
42	S-16M42LT	60.9	54.0	28.0	80.0	110.0	1.65
43	S-16M43LT	61.9	54.0	28.0	80.0	110.0	1.70
44	S-16M44LT	63.4	54.0	28.0	80.0	110.0	1.70
45	S-16M45LT	64.6	54.0	28.0	80.0	110.0	1.70
46	S-16M46LT	65.9	54.0	28.0	80.0	110.0	2.15

## FRACTIONAL DEEP HEXAGON



A/F inch	MODEL NO.	D1 inch	D2 inch	T inch	C inch	OAL inch	Wt. lbs.
7/8	S-1614LT	1.417	2.125	0.629	3.149	4.330	2.21
15/16	S-1615LT	1.507	2.125	0.629	3.149	4.330	2.21
1	S-1616LT	1.574	2.125	0.629	3.149	4.330	2.42
1.1/16	S-1617LT	1.653	2.125	0.629	3.149	4.330	2.53
1.1/8	S-1618LT	1.728	2.125	0.629	3.149	4.330	2.53
1.3/16	S-1619LT	1.807	2.125	0.826	3.149	4.330	2.70
1.1/4	S-1620LT	1.889	2.125	0.826	3.149	4.330	2.75
1.5/16	S-1621LT	1.968	2.125	0.826	3.149	4.330	2.95
1.3/8	S-1622LT	2.047	2.125	0.826	3.149	4.330	2.86
1.7/16	S-1623LT	2.125	2.125	0.984	3.149	4.330	3.22
1.1/2	S-1624LT	2.200	2.125	0.984	3.149	4.330	3.30
1.9/16	S-1625LT	2.283	2.125	0.984	3.149	4.330	3.52
1.5/8	S-1626LT	2.358	2.125	1.102	3.149	4.330	3.52
1.11/16	S-1627LT	2.437	2.125	1.102	3.149	4.330	3.52
1.3/4	S-1628LT	2.519	2.125	1.102	3.149	4.330	3.74
1.13/16	S-1629LT	2.594	2.125	1.102	3.149	4.330	3.74





# IMPACT ACCESSORIES

## METRIC HEX DRIVER SOCKETS

HEX A/F mm	MODEL NO.	BIT LENGTH	OAL mm	Wt Kg.
10	16M10H	20.0	85.0	0.60
12	16M12H	25.0	90.0	0.65
14	16M14H	25.0	90.0	0.75
17	16M17H	30.0	95.0	0.80
19	16M19H	30.0	95.0	0.80
22	16M22H	45.0	115.0	0.90
24	16M24H	45.0	115.0	0.95
27	16M27H	50.0	120.0	1.15
30	16M30H	50.0	120.0	1.20
32	16M32H	50.0	120.0	1.30
36	16M36H	50.0	120.0	1.30

## FRACTIONAL HEX DRIVER SOCKETS

HEX A/F inch	MODEL NO	BIT LENGTH	OAL inch	Wt lbs.
1/2	1608H	0.984	3.543	1.43
9/16	1609H	0.984	3.543	1.65
5/8	1610H	1.181	3.740	1.65
3/4	1612H	1.181	3.740	1.76
13/16	1613H	1.771	4.527	1.87
7/8	1614H	1.771	4.527	1.98
1	1616H	1.968	4.724	2.20
1.1/16	1617H	1.968	4.724	2.20
1.1/8	1618H	1.968	4.724	2.42
1.3/16	1619H	1.968	4.724	2.64
1.1/4	1620H	1.968	4.724	2.86

## REGULAR EXTENSIONS

OAL mm (inch)	MODEL NO.	SHANK DIA mm (inch)	HEAD DIA mm (inch)	Wt Kg. (lbs.)
100 (4")	E1604	36.0 (1.417)	54.0 (2.125)	1.10 (2.42)
125 (5")	E1605			1.30 (2.86)
150 (6")	E1606			1.50 (3.30)
180 (7")	E1607	36.0 (1.417)	54.0 (2.125)	1.75 (3.85)
250 (10")	E1610			2.00 (4.40)
330 (13")	E1613			2.45 (5.39)



## SQUARE ADAPTORS

SIZE	MODEL NO.	HEAD DIA mm (inch)	OAL mm (inch)	Wt Kg. (lbs.)
1" F X 3/4" M	A1612	54.0 (2.125)	70.0 (2.755)	0.64 (1.40)
1" F X 1.1/2" M	A1624		90.0 (3.543)	0.90 (1.98)
1" F X #5 M	A1695		110.0 (4.330)	1.20 (2.64)



## UNIVERSAL JOINT

SQUARE DRIVE	MODEL NO.	DIA mm (inch)	OAL mm (inch)	Wt Kg. (lbs.)
1"	U1616	54.0 (2.125)	117.0 (4.606)	1.20 (2.64)



## DOUBLE MALE EXTENSIONS

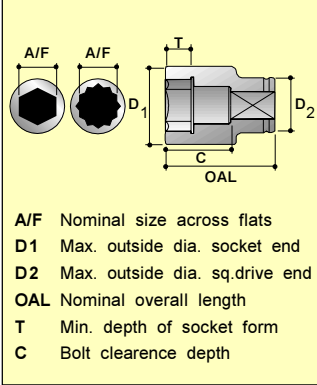
OAL mm (inch)	MODEL NO.	SHANK DIA mm (inch)	HEAD DIA mm (inch)	Wt Kg. (lbs.)
75 (3")	S1603	35.0 (1.377)	25.0 (1.000)	0.70 (1.54)
125 (5")	S1605			1.00 (2.20)
180 (7")	S1607			1.45 (3.19)
250 (10")	S1610	35.0 (1.377)	25.0 (1.000)	1.70 (3.74)
330 (13")	S1613			2.20 (4.84)
380 (15")	S1615	35.0 (1.377)	25.0 (1.000)	2.50 (5.50)
430 (17")	S1617			3.00 (6.60)



## DOUBLE FEMALE ADAPTORS

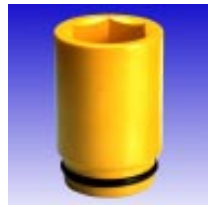
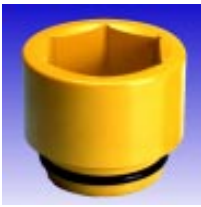
SIZE	MODEL NO.	HEAD DIA mm (inch)	OAL mm (inch)	Wt Kg. (lbs.)
1" F X 3/4" F	AN1612	54.0 (2.125)	65.0 (2.559)	0.75 (1.65)
1" F X 1" F	AN1616		70.0 (2.755)	0.95 (2.09)
1" F X 1.1/2" F	AN1624		80.0 (3.149)	1.10 (2.42)





# IMPACT SOCKETS

1 1/2"



## METRIC HEXAGON



## FRACTIONAL HEXAGON



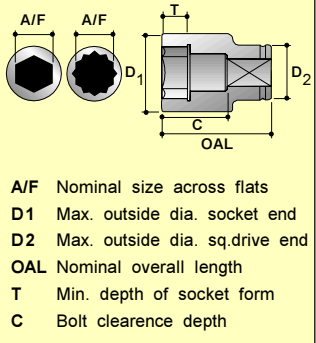
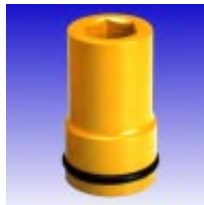
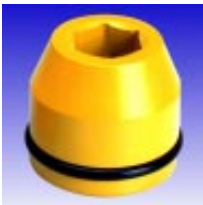
A/F mm	MODEL NO.	D1 mm	D2 mm	T mm	C mm	OAL mm	Wt. Kg.
32	S-24M32	56.0	86.0	22.0	34.0	76.0	2.30
33	S-24M33	56.0	86.0	22.0	34.0	76.0	2.30
34	S-24M34	61.0	86.0	22.0	34.0	76.0	2.30
35	S-24M35	61.0	86.0	22.0	34.0	76.0	2.30
36	S-24M36	64.0	86.0	25.0	39.0	81.0	2.35
37	S-24M37	64.0	86.0	25.0	39.0	81.0	2.35
38	S-24M38	66.0	86.0	25.0	39.0	81.0	2.40
39	S-24M39	66.0	86.0	25.0	39.0	81.0	2.40
40	S-24M40	69.0	86.0	25.0	39.0	81.0	2.40
41	S-24M41	69.0	86.0	25.0	39.0	81.0	2.40
42	S-24M42	72.0	86.0	25.0	39.0	81.0	2.40
43	S-24M43	72.0	86.0	25.0	39.0	81.0	2.40
44	S-24M44	72.0	86.0	25.0	39.0	81.0	2.50
45	S-24M45	72.0	86.0	25.0	39.0	81.0	2.50
46	S-24M46	76.0	86.0	27.0	41.0	83.0	2.50
47	S-24M47	76.0	86.0	27.0	41.0	83.0	2.60
48	S-24M48	76.0	86.0	27.0	41.0	83.0	2.60
49	S-24M49	79.0	86.0	27.0	41.0	83.0	2.60
50	S-24M50	81.0	86.0	27.0	41.0	83.0	2.60
51	S-24M51	81.0	86.0	27.0	41.0	83.0	2.60
52	S-24M52	84.0	86.0	27.0	41.0	83.0	2.60
54	S-24M54	84.0	86.0	27.0	47.0	90.0	2.70
55	S-24M55	87.0	86.0	30.0	47.0	90.0	2.70
56	S-24M56	87.0	86.0	30.0	47.0	90.0	2.70
57	S-24M57	87.0	86.0	30.0	50.0	93.0	2.80
58	S-24M58	91.0	86.0	30.0	50.0	93.0	2.80
59	S-24M59	91.0	86.0	30.0	50.0	93.0	2.80
60	S-24M60	94.0	86.0	32.0	50.0	93.0	2.80
61	S-24M61	94.0	86.0	32.0	54.0	97.0	3.00
62	S-24M62	97.0	86.0	32.0	54.0	97.0	3.00
65	S-24M65	99.0	86.0	37.0	54.0	97.0	3.00
67	S-24M67	105.0	86.0	37.0	59.0	102.0	3.20
70	S-24M70	105.0	86.0	40.0	59.0	102.0	3.40
73	S-24M73	108.0	86.0	40.0	64.0	106.0	3.85
75	S-24M75	110.0	86.0	40.0	64.0	106.0	3.85
76	S-24M76	110.0	86.0	40.0	69.0	111.0	4.20
80	S-24M80	118.0	86.0	45.0	69.0	111.0	4.90
85	S-24M85	125.0	86.0	48.0	75.0	117.0	5.80
86	S-24M86	125.0	86.0	48.0	75.0	117.0	5.90
90	S-24M90	130.0	86.0	51.0	77.0	119.0	7.40
95	S-24M95	136.0	127.0	54.0	77.0	119.0	8.10
100	S-24M100	143.0	127.0	54.0	84.0	126.0	8.70
105	S-24M105	149.0	127.0	57.0	84.0	126.0	9.75
110	S-24M110	155.0	127.0	63.0	94.0	138.0	11.60
115	S-24M115	161.0	127.0	70.0	94.0	138.0	11.60
120	S-24M120	168.0	127.0	75.0	104.0	146.0	12.60
125	S-24M125	174.0	127.0	75.0	104.0	146.0	14.50
130	S-24M130	180.0	127.0	82.0	117.0	159.0	17.50

A/F inch	MODEL NO.	D1 inch	D2 inch	T inch	C inch	OAL inch	Wt. lbs.
1.3/8	S-2422	2.401	3.385	0.866	1.338	2.992	5.06
1.7/16	S-2423	2.519	3.385	0.984	1.535	3.188	5.06
1.1/2	S-2424	2.598	3.385	0.984	1.535	3.188	5.17
1.9/16	S-2425	2.598	3.385	0.984	1.535	3.188	5.28
1.5/8	S-2426	2.716	3.385	0.984	1.535	3.188	5.28
1.11/16	S-2427	2.834	3.385	0.984	1.535	3.188	5.28
1.3/4	S-2428	2.834	3.385	0.984	1.535	3.188	5.50
1.13/16	S-2429	2.992	3.385	1.062	1.614	3.267	5.50
1.7/8	S-2430	2.992	3.385	1.062	1.614	3.267	5.50
1.15/16	S-2431	3.110	3.385	1.062	1.614	3.267	5.72
2	S-2432	3.188	3.385	1.062	1.614	3.267	5.72
2.1/16	S-2433	3.307	3.385	1.062	1.614	3.267	5.94
2.1/8	S-2434	3.307	3.385	1.062	1.850	3.543	5.94
2.3/16	S-2435	3.425	3.385	1.181	1.850	3.543	5.94
2.1/4	S-2436	3.425	3.385	1.181	1.968	3.661	6.16
2.5/16	S-2437	3.582	3.385	1.181	1.968	3.661	6.16
2.3/8	S-2438	3.700	3.385	1.259	1.968	3.661	6.16
2.7/16	S-2439	3.818	3.385	1.259	2.125	3.818	6.60
2.1/2	S-2440	3.818	3.385	1.259	2.125	3.818	6.60
2.9/16	S-2441	3.897	3.385	1.456	2.125	3.818	6.60
2.5/8	S-2442	4.173	3.385	1.456	2.322	4.015	7.04
2.11/16	S-2443	4.133	3.385	1.456	2.322	4.015	7.04
2.3/4	S-2444	4.133	3.385	1.574	2.322	4.015	7.48
2.13/16	S-2445	4.212	3.385	1.574	2.519	4.173	7.70
2.7/8	S-2446	4.291	3.385	1.574	2.519	4.173	8.47
2.15/16	S-2447	4.370	3.385	1.574	2.519	4.173	8.47
3	S-2448	4.370	3.385	1.574	2.716	4.370	8.47
3.1/16	S-2449	4.645	3.385	1.574	2.716	4.370	10.12
3.1/8	S-2450	4.645	3.385	1.574	2.716	4.370	10.12
3.3/16	S-2451	4.763	3.385	1.771	2.716	4.370	11.00
3.1/4	S-2452	4.763	3.385	1.771	2.716	4.370	11.00
3.5/16	S-2453	4.763	3.385	1.771	2.716	4.370	11.00
3.3/8	S-2454	4.921	4.921	1.889	2.952	4.606	12.98
3.7/16	S-2455	5.118	4.921	1.889	2.952	4.606	16.28
3.1/2	S-2456	5.118	4.921	1.889	2.952	4.606	16.28
3.9/16	S-2457	5.118	4.921	2.007	3.031	4.685	16.28
3.5/8	S-2458	5.275	4.921	2.007	3.031	4.685	16.72
3.11/16	S-2459	5.275	4.921	2.007	3.031	4.685	17.60
3.3/4	S-2460	5.354	4.921	2.125	3.031	4.685	17.82
3.13/16	S-2461	5.511	4.921	2.125	3.031	4.685	18.48
3.7/8	S-2462	5.629	4.921	2.125	3.031	4.685	19.14
3.15/16	S-2463	5.629	4.921	2.125	3.307	4.960	20.46
4	S-2464	5.748	4.921	2.125	3.307	4.960	21.34
4.1/16	S-2465	5.748	4.921	2.125	3.307	4.960	21.45
4.1/8	S-2466	5.866	4.921	2.244	3.307	4.960	21.45
4.3/16	S-2467	5.866	4.921	2.244	3.307	4.960	21.45
4.1/4	S-2468	6.102	4.921	2.362	3.307	4.960	22.44
4.3/8	S-2470	6.102	4.921	2.480	3.700	5.433	23.32
4.1/2	S-2472	6.338	4.921	2.755	3.700	5.433	25.52
4.5/8	S-2474	6.456	4.921	2.755	3.700	5.433	26.62
4.3/4	S-2476	6.614	4.921	2.952	4.094	5.748	27.72
5	S-2480	7.000	4.921	2.952	4.094	5.748	32.45
5.1/8	S-2482	7.086	4.921	3.228	4.606	6.259	38.50



1 1/2"

# IMPACT SOCKETS



## METRIC DEEP HEXAGON



A/F mm	MODEL NO.	D1 mm	D2 mm	T mm	C mm	OAL mm	Wt. Kg.
32	S-24M32L	56.0	86.0	22.0	83.0	125.0	3.10
33	S-24M33L	56.0	86.0	22.0	83.0	125.0	3.10
34	S-24M34L	61.0	86.0	22.0	83.0	125.0	3.10
35	S-24M35L	61.0	86.0	22.0	83.0	125.0	3.15
36	S-24M36L	64.0	86.0	25.0	83.0	125.0	3.15
37	S-24M37L	64.0	86.0	25.0	83.0	125.0	3.15
38	S-24M38L	66.0	86.0	25.0	83.0	125.0	3.50
39	S-24M39L	66.0	86.0	25.0	83.0	125.0	3.50
40	S-24M40L	69.0	86.0	25.0	83.0	125.0	3.50
41	S-24M41L	69.0	86.0	25.0	83.0	125.0	3.75
42	S-24M42L	72.0	86.0	25.0	83.0	125.0	3.75
43	S-24M43L	72.0	86.0	25.0	83.0	125.0	3.75
44	S-24M44L	72.0	86.0	25.0	83.0	125.0	3.95
45	S-24M45L	72.0	86.0	25.0	83.0	125.0	3.95
46	S-24M46L	76.0	86.0	27.0	88.0	130.0	4.00
47	S-24M47L	76.0	86.0	27.0	88.0	130.0	3.95
48	S-24M48L	76.0	86.0	27.0	88.0	130.0	4.05
49	S-24M49L	79.0	86.0	27.0	88.0	130.0	4.05
50	S-24M50L	81.0	86.0	27.0	88.0	130.0	4.05
51	S-24M51L	81.0	86.0	27.0	88.0	130.0	4.25
52	S-24M52L	84.0	86.0	27.0	88.0	130.0	4.25
54	S-24M54L	84.0	86.0	27.0	88.0	130.0	4.70
55	S-24M55L	87.0	86.0	30.0	88.0	130.0	4.70
56	S-24M56L	87.0	86.0	30.0	88.0	130.0	4.70
57	S-24M57L	87.0	86.0	30.0	88.0	130.0	4.70
58	S-24M58L	91.0	86.0	30.0	88.0	130.0	4.70
59	S-24M59L	91.0	86.0	30.0	88.0	130.0	4.70
60	S-24M60L	94.0	86.0	32.0	108.0	150.0	5.00
61	S-24M61L	94.0	86.0	32.0	108.0	150.0	5.25
62	S-24M62L	97.0	86.0	32.0	108.0	150.0	5.35
65	S-24M65L	99.0	86.0	37.0	108.0	150.0	5.70
67	S-24M67L	105.0	86.0	37.0	108.0	150.0	5.70
70	S-24M70L	105.0	86.0	40.0	118.0	160.0	6.20
73	S-24M73L	108.0	86.0	40.0	118.0	160.0	7.12
75	S-24M75L	110.0	86.0	40.0	118.0	160.0	7.95
76	S-24M76L	110.0	86.0	40.0	118.0	160.0	8.25
80	S-24M80L	118.0	86.0	45.0	133.0	175.0	9.35
85	S-24M85L	125.0	125.0	48.0	133.0	175.0	9.65
86	S-24M86L	125.0	125.0	48.0	133.0	175.0	9.85
90	S-24M90L	130.0	125.0	51.0	133.0	175.0	9.40
95	S-24M95L	136.0	125.0	54.0	138.0	180.0	10.10
100	S-24M100L	143.0	125.0	54.0	143.0	185.0	10.70
105	S-24M105L	149.0	125.0	57.0	153.0	195.0	11.75
110	S-24M110L	155.0	125.0	63.0	153.0	195.0	13.60
115	S-24M115L	161.0	125.0	70.0	153.0	195.0	14.60
120	S-24M120L	168.0	125.0	75.0	158.0	200.0	15.60
125	S-24M125L	174.0	125.0	75.0	158.0	200.0	16.50
130	S-24M130L	180.0	125.0	82.0	158.0	200.0	19.50

## FRACTIONAL DEEP HEXAGON



A/F inch	MODEL NO.	D1 inch	D2 inch	T inch	C inch	OAL inch	Wt. lbs.
1.3/8	S-2422L	2.401	3.385	0.866	3.268	4.921	6.82
1.7/16	S-2423L	2.519	3.385	0.984	3.268	4.921	6.82
1.1/2	S-2424L	2.598	3.385	0.984	3.268	4.921	7.70
1.9/16	S-2425L	2.598	3.385	0.984	3.268	4.921	7.70
1.5/8	S-2426L	2.716	3.385	0.984	3.268	4.921	8.25
1.11/16	S-2427L	2.834	3.385	0.984	3.268	4.921	8.25
1.3/4	S-2428L	2.834	3.385	0.984	3.268	4.921	8.69
1.13/16	S-2429L	2.992	3.385	1.062	3.465	5.118	9.24
1.7/8	S-2430L	2.992	3.385	1.062	3.465	5.118	9.24
1.15/16	S-2431L	3.110	3.385	1.062	3.465	5.118	9.24
2	S-2432L	3.188	3.385	1.062	3.465	5.118	9.46
2.1/16	S-2433L	3.307	3.385	1.062	3.465	5.118	10.34
2.1/8	S-2434L	3.307	3.385	1.062	3.465	5.118	10.34
2.3/16	S-2435L	3.425	3.385	1.181	3.465	5.118	10.78
2.1/4	S-2436L	3.425	3.385	1.181	3.465	5.118	10.78
2.5/16	S-2437L	3.582	3.385	1.181	3.465	5.118	10.78
2.3/8	S-2438L	3.700	3.385	1.259	4.252	5.905	11.00
2.7/16	S-2439L	3.818	3.385	1.259	4.252	5.905	11.77
2.1/2	S-2440L	3.818	3.385	1.259	4.252	5.905	11.77
2.9/16	S-2441L	3.897	3.385	1.456	4.252	5.905	12.54
2.5/8	S-2442L	4.173	3.385	1.456	4.252	5.905	12.98
2.11/16	S-2443L	4.133	3.385	1.456	4.252	5.905	12.98
2.3/4	S-2444L	4.133	3.385	1.574	4.646	6.299	15.62
2.13/16	S-2445L	4.212	3.385	1.574	4.646	6.299	15.73
2.7/8	S-2446L	4.291	3.385	1.574	4.646	6.299	15.73
2.15/16	S-2447L	4.370	3.385	1.574	4.646	6.299	17.49
3	S-2448L	4.370	3.385	1.574	4.646	6.299	17.49
3.1/16	S-2449L	4.645	3.385	1.574	4.646	6.299	20.57
3.1/8	S-2450L	4.645	3.385	1.574	5.236	6.889	20.57
3.3/16	S-2451L	4.763	3.385	1.771	5.236	6.889	21.23
3.1/4	S-2452L	4.763	3.385	1.771	5.236	6.889	21.23
3.5/16	S-2453L	4.763	3.385	1.771	5.236	6.889	21.23
3.3/8	S-2454L	4.921	4.921	1.889	5.236	6.889	21.67
3.7/16	S-2455L	5.118	4.921	1.889	5.236	6.889	21.67
3.1/2	S-2456L	5.118	4.921	1.889	5.236	6.889	21.67
3.9/16	S-2457L	5.118	4.921	2.007	5.236	6.889	21.67
3.5/8	S-2458L	5.275	4.921	2.007	5.236	6.889	22.00
3.11/16	S-2459L	5.275	4.921	2.007	5.236	6.889	22.55
3.3/4	S-2460L	5.354	4.921	2.125	5.433	7.086	23.65
3.13/16	S-2461L	5.511	4.921	2.125	5.433	7.086	24.20
3.7/8	S-2462L	5.629	4.921	2.125	5.433	7.086	24.20
3.15/16	S-2463L	5.629	4.921	2.125	5.630	7.283	24.64
4	S-2464L	5.748	4.921	2.125	5.630	7.283	25.85
4.1/16	S-2465L	5.748	4.921	2.125	5.630	7.283	25.85
4.1/8	S-2466L	5.866	4.921	2.244	6.024	7.677	26.20
4.3/16	S-2467L	5.866	4.921	2.244	6.024	7.677	26.20
4.1/4	S-2468L	6.102	4.921	2.362	6.024	7.677	27.50
4.3/8	S-2470L	6.102	4.921	2.480	6.024	7.677	29.92
4.1/2	S-2472L	6.338	4.921	2.755	6.024	7.677	32.12
4.5/8	S-2474L	6.456	4.921	2.755	6.211	7.874	34.32
4.3/4	S-2476L	6.614	4.921	2.952	6.211	7.874	36.30
5	S-2480L	7.000	4.921	2.952	6.211	7.874	40.37
5.1/8	S-2482L	7.086	4.921	3.228	6.211	7.874	42.90



# IMPACT ACCESSORIES

1 1/2"

## REGULAR EXTENSIONS

OAL mm (inch)	MODEL NO.	SHANK DIA mm (inch)	HEAD DIA mm (inch)	Wt Kg. (lbs.)
150 (6") 304 (12")	E2406 E2412	52.0 (2.047)	86.0 (3.386)	3.90 (8.58) 6.30 (13.86)



## DOUBLE MALE EXTENSIONS

OAL mm (inch)	MODEL NO.	SHANK DIA mm (inch)	HEAD DIA mm (inch)	Wt Kg. (lbs.)
100 (4") 125 (5") 250 (10") 510 (20")	S2404 S2405 S2410 S2420	52.0 (2.047)	38.1 (1.500)	2.50 (5.50) 2.80 (6.16) 3.60 (7.92) 5.10 (11.20)



## SQUARE ADAPTORS

SIZE	MODEL NO.	HEAD DIA mm (inch)	OAL mm (inch)	Wt Kg. (lbs.)
1.1/2" F X 1" M	A2416	86.0 (3.386)	100.0 (3.937)	1.98 (4.37)
1.1/2" F X 2.1/2" M	A2440		113.0 (4.448)	3.92 (8.65)
1.1/2" F X #5 M	A2495		115.0 (4.527)	4.20 (9.25)



## DOUBLE FEMALE ADAPTORS

SIZE	MODEL NO.	HEAD DIA mm (inch)	OAL mm (inch)	Wt Kg. (lbs.)
1.1/2" F X 1" F	AN2416	86.0 (3.386)	80.0 (3.149)	2.30 (5.06)
1.1/2" F X 1.1/2" F	AN2424		95.0 (3.740)	3.60 (7.92)
1.1/2" F X 2.1/2" F	AN2440		110.0 (4.330)	4.50 (9.90)



## UNIVERSAL JOINT

SQUARE DRIVE	MODEL NO.	DIA mm (inch)	OAL mm (inch)	Wt Kg. (lbs.)
1.1/2"	U2424	86.0 (3.386)	158 (6.220)	3.85 (8.47)

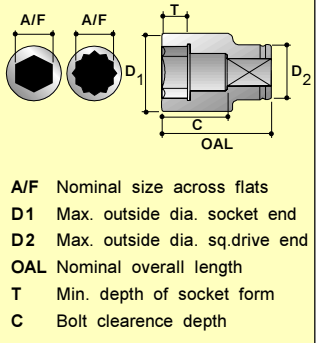
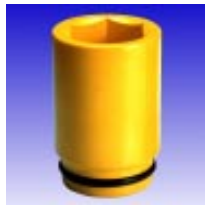
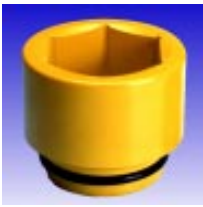


TORQTOOL Impact Sockets ideal for use with Hydraulic Torque Wrenches.



2 1/2"

# IMPACT SOCKETS



## METRIC HEXAGON

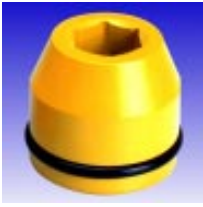
## FRACTIONAL HEXAGON

A/F mm	MODEL NO.	D1 mm	D2 mm	T mm	C mm	OAL mm
43	S-40M43	104.0	127.0	25.0	60.0	118.0
44	S-40M44	104.0	127.0	25.0	60.0	118.0
45	S-40M45	104.0	127.0	25.0	60.0	118.0
46	S-40M46	104.0	127.0	28.0	60.0	118.0
47	S-40M47	104.0	127.0	28.0	60.0	118.0
48	S-40M48	104.0	127.0	28.0	60.0	118.0
49	S-40M49	104.0	127.0	30.0	60.0	118.0
50	S-40M50	104.0	127.0	30.0	60.0	118.0
51	S-40M51	104.0	127.0	30.0	60.0	118.0
52	S-40M52	104.0	127.0	30.0	60.0	118.0
54	S-40M54	104.0	127.0	30.0	60.0	118.0
55	S-40M55	104.0	127.0	33.0	60.0	118.0
56	S-40M56	104.0	127.0	33.0	60.0	118.0
57	S-40M57	104.0	127.0	33.0	60.0	118.0
58	S-40M58	104.0	127.0	33.0	60.0	118.0
59	S-40M59	104.0	127.0	33.0	60.0	118.0
60	S-40M60	104.0	127.0	36.0	60.0	118.0
62	S-40M62	104.0	127.0	36.0	60.0	118.0
65	S-40M65	104.0	127.0	39.0	60.0	118.0
67	S-40M67	104.0	127.0	39.0	60.0	118.0
70	S-40M70	104.0	127.0	43.0	60.0	118.0
73	S-40M73	118.0	127.0	43.0	70.0	128.0
75	S-40M75	118.0	127.0	43.0	70.0	128.0
76	S-40M76	118.0	127.0	43.0	70.0	128.0
80	S-40M80	127.0	127.0	48.0	70.0	128.0
85	S-40M85	133.0	127.0	48.0	75.0	133.0
86	S-40M86	133.0	127.0	48.0	75.0	133.0
90	S-40M90	136.0	127.0	52.0	77.0	135.0
95	S-40M95	143.0	127.0	55.0	77.0	135.0
100	S-40M100	150.0	127.0	58.0	86.0	144.0
105	S-40M105	157.0	127.0	62.0	86.0	144.0
110	S-40M110	160.0	127.0	64.0	95.0	153.0
115	S-40M115	168.0	127.0	68.0	103.0	161.0
120	S-40M120	175.0	127.0	72.0	103.0	161.0
125	S-40M125	186.0	127.0	72.0	103.0	161.0
130	S-40M130	186.0	127.0	78.0	119.0	177.0
135	S-40M135	193.0	127.0	80.0	119.0	177.0
140	S-40M140	200.0	127.0	86.0	122.0	180.0
145	S-40M145	205.0	152.0	86.0	127.0	185.0
150	S-40M150	214.0	152.0	90.0	135.0	193.0
155	S-40M155	218.0	152.0	92.0	135.0	193.0
160	S-40M160	225.0	152.0	95.0	139.0	197.0
165	S-40M165	232.0	175.0	98.0	146.0	204.0
170	S-40M170	237.0	175.0	98.0	146.0	204.0
175	S-40M175	243.0	175.0	103.0	153.0	211.0
180	S-40M180	250.0	175.0	110.0	159.0	217.0
185	S-40M185	255.0	175.0	110.0	159.0	217.0
190	S-40M190	265.0	175.0	113.0	163.0	221.0
195	S-40M195	270.0	175.0	113.0	167.0	225.0
200	S-40M200	275.0	175.0	118.0	171.0	229.0
210	S-40M210	285.0	175.0	121.0	177.0	235.0
215	S-40M215	295.0	175.0	125.0	184.0	242.0
225	S-40M225	305.0	175.0	132.0	203.0	261.0

A/F inch	MODEL NO.	D1 inch	D2 inch	T inch	C inch	OAL inch
1.5/8	S-4026	4.094	5.000	0.984	0.423	4.645
1.3/4	S-4028	4.094	5.000	0.984	0.423	4.645
1.7/8	S-4030	4.094	5.000	1.102	0.423	4.645
2	S-4032	4.094	5.000	1.181	0.423	4.645
2.1/8	S-4034	4.094	5.000	1.299	0.423	4.645
2.1/4	S-4036	4.094	5.000	1.299	0.423	4.645
2.3/8	S-4038	4.094	5.000	1.417	0.423	4.645
2.1/2	S-4040	4.094	5.000	1.417	0.423	4.645
2.5/8	S-4042	4.094	5.000	1.535	0.423	4.645
2.3/4	S-4044	4.094	5.000	1.692	0.423	4.645
2.7/8	S-4046	4.645	5.000	1.692	1.166	5.039
2.15/16	S-4047	4.645	5.000	1.692	1.166	5.039
3	S-4048	4.645	5.000	1.692	1.166	5.039
3.1/8	S-4050	5.000	5.000	1.889	1.166	5.039
3.1/4	S-4052	5.118	5.000	1.889	1.166	5.039
3.3/8	S-4054	5.236	5.000	1.889	1.250	5.236
3.1/2	S-4056	4.354	5.000	1.889	1.250	5.236
3.5/8	S-4058	5.511	5.000	2.047	1.283	5.314
3.3/4	S-4060	5.629	5.000	2.165	1.283	5.314
3.7/8	S-4062	5.787	5.000	2.165	1.283	5.314
4	S-4064	5.905	5.000	2.283	1.433	5.669
4.1/8	S-4066	6.181	5.000	2.440	1.433	5.669
4.1/4	S-4068	6.299	5.000	2.440	1.433	5.669
4.3/8	S-4070	6.496	5.000	2.519	1.583	6.023
4.1/2	S-4072	6.614	5.000	2.677	1.716	6.338
4.5/8	S-4074	6.889	5.000	2.677	1.716	6.338
4.7/8	S-4078	7.086	5.000	2.834	1.716	6.338
5	S-4080	7.322	5.000	2.834	1.716	6.338
5.1/8	S-4082	7.322	5.000	3.070	1.983	6.968
5.1/4	S-4084	7.598	5.000	3.070	1.983	6.968
5.3/8	S-4086	7.716	5.000	3.149	1.983	6.968
5.1/2	S-4088	7.874	5.000	3.385	2.033	7.086
5.5/8	S-4090	7.874	5.000	3.385	2.116	7.283
5.3/4	S-4092	8.070	5.984	3.385	2.116	7.283
6.1/8	S-4098	8.582	5.984	3.543	2.250	7.598
6.1/2	S-40104	9.133	6.889	3.858	2.433	8.031
6.7/8	S-40110	9.566	6.889	4.055	2.550	8.307
7	S-40112	9.842	6.889	4.055	2.550	8.307
7.1/4	S-40116	10.039	6.889	4.330	2.650	8.543
7.1/2	S-40120	10.433	6.889	4.448	2.716	8.700
7.5/8	S-40122	10.629	6.889	4.448	2.783	8.858
7.3/4	S-40124	10.826	6.889	4.448	2.783	8.858
7.7/8	S-40126	10.826	6.889	4.645	2.850	9.015
8	S-40128	11.023	6.889	4.645	2.850	9.015
8.1/8	S-40130	11.220	6.889	4.645	2.850	9.015
8.1/4	S-40132	11.220	6.889	4.763	2.950	9.251
8.3/8	S-40134	11.417	6.889	4.763	2.950	9.251
8.1/2	S-40136	11.614	6.889	4.921	3.066	9.527
9	S-40144	12.283	6.889	5.196	3.383	10.275
9.1/4	S-40148	12.401	6.889	5.354	3.783	11.220

# IMPACT SOCKETS

2 1/2"



## METRIC DEEP HEXAGON



## FRACTIONAL DEEP HEXAGON



A/F mm	MODEL NO.	D1 mm	D2 mm	T mm	C mm	OAL mm
43	S-40M43L	104.0	127.0	25.0	132.0	192.0
44	S-40M44L	104.0	127.0	25.0	132.0	192.0
45	S-40M45L	104.0	127.0	25.0	132.0	192.0
46	S-40M46L	104.0	127.0	28.0	132.0	192.0
47	S-40M47L	104.0	127.0	28.0	132.0	192.0
48	S-40M48L	104.0	127.0	28.0	132.0	192.0
49	S-40M49L	104.0	127.0	30.0	132.0	192.0
50	S-40M50L	104.0	127.0	30.0	132.0	192.0
51	S-40M51L	104.0	127.0	30.0	132.0	192.0
52	S-40M52L	104.0	127.0	30.0	132.0	192.0
54	S-40M54L	104.0	127.0	30.0	132.0	192.0
55	S-40M55L	104.0	127.0	33.0	132.0	192.0
56	S-40M56L	104.0	127.0	33.0	132.0	192.0
57	S-40M57L	104.0	127.0	33.0	132.0	192.0
58	S-40M58L	104.0	127.0	33.0	132.0	192.0
59	S-40M59L	104.0	127.0	33.0	132.0	192.0
60	S-40M60L	104.0	127.0	36.0	132.0	192.0
62	S-40M62L	104.0	127.0	36.0	132.0	192.0
65	S-40M65L	104.0	127.0	39.0	132.0	192.0
67	S-40M67L	104.0	127.0	39.0	132.0	192.0
70	S-40M70L	104.0	127.0	43.0	132.0	192.0
73	S-40M73L	118.0	127.0	43.0	132.0	192.0
75	S-40M75L	118.0	127.0	43.0	132.0	192.0
76	S-40M76L	118.0	127.0	43.0	132.0	192.0
80	S-40M80L	127.0	127.0	48.0	132.0	192.0
85	S-40M85L	133.0	127.0	48.0	132.0	192.0
86	S-40M86L	133.0	127.0	48.0	132.0	192.0
90	S-40M90L	136.0	127.0	52.0	132.0	192.0
95	S-40M95L	143.0	127.0	55.0	132.0	192.0
100	S-40M100L	150.0	127.0	58.0	138.0	198.0
105	S-40M105L	157.0	127.0	62.0	138.0	198.0
110	S-40M110L	160.0	127.0	64.0	147.0	207.0
115	S-40M115L	168.0	127.0	68.0	147.0	207.0
120	S-40M120L	175.0	127.0	72.0	155.0	215.0
125	S-40M125L	186.0	127.0	72.0	155.0	215.0
130	S-40M130L	186.0	127.0	78.0	163.0	223.0
135	S-40M135L	193.0	127.0	80.0	171.0	231.0
140	S-40M140L	200.0	127.0	86.0	174.0	234.0
145	S-40M145L	205.0	152.0	86.0	180.0	240.0
150	S-40M150L	214.0	152.0	90.0	188.0	248.0
155	S-40M155L	218.0	152.0	92.0	188.0	248.0
160	S-40M160L	225.0	152.0	95.0	192.0	252.0
165	S-40M165L	232.0	175.0	98.0	200.0	260.0
170	S-40M170L	237.0	175.0	98.0	200.0	260.0
175	S-40M175L	243.0	175.0	103.0	204.0	264.0
180	S-40M180L	250.0	175.0	110.0	212.0	272.0
185	S-40M185L	255.0	175.0	110.0	212.0	272.0
190	S-40M190L	265.0	175.0	113.0	216.0	276.0
195	S-40M195L	270.0	175.0	113.0	220.0	280.0
200	S-40M200L	275.0	175.0	118.0	224.0	284.0
210	S-40M210L	285.0	175.0	121.0	230.0	290.0
215	S-40M215L	295.0	175.0	125.0	256.0	316.0
225	S-40M225L	305.0	175.0	132.0	256.0	316.0

A/F inch	MODEL NO.	D1 inch	D2 inch	T inch	C inch	OAL inch
1.5/8	S-4026L	4.094	5.000	0.984	5.197	7.559
1.3/4	S-4028L	4.094	5.000	0.984	5.197	7.559
1.7/8	S-4030L	4.094	5.000	1.102	5.197	7.559
2	S-4032L	4.094	5.000	1.181	5.197	7.559
2.1/8	S-4034L	4.094	5.000	1.299	5.197	7.559
2.1/4	S-4036L	4.094	5.000	1.299	5.197	7.559
2.3/8	S-4038L	4.094	5.000	1.417	5.197	7.559
2.1/2	S-4040L	4.094	5.000	1.417	5.197	7.559
2.5/8	S-4042L	4.094	5.000	1.535	5.197	7.559
2.3/4	S-4044L	4.094	5.000	1.692	5.197	7.559
2.7/8	S-4046L	4.645	5.000	1.692	5.197	7.559
2.15/16	S-4047L	4.645	5.000	1.692	5.197	7.559
3	S-4048L	4.645	5.000	1.692	5.197	7.559
3.1/8	S-4050L	5.000	5.000	1.889	5.197	7.559
3.1/4	S-4052L	5.118	5.000	1.889	5.197	7.559
3.3/8	S-4054L	5.236	5.000	1.889	5.197	7.559
3.1/2	S-4056L	4.354	5.000	1.889	5.197	7.559
3.5/8	S-4058L	5.511	5.000	2.047	5.197	7.559
3.3/4	S-4060L	5.629	5.000	2.165	5.197	7.559
3.7/8	S-4062L	5.787	5.000	2.165	5.197	7.559
4	S-4064L	5.905	5.000	2.283	5.197	7.559
4.1/8	S-4066L	6.181	5.000	2.440	5.197	7.559
4.1/4	S-4068L	6.299	5.000	2.440	5.788	8.150
4.3/8	S-4070L	6.496	5.000	2.519	5.788	8.150
4.1/2	S-4072L	6.614	5.000	2.677	5.788	8.150
4.5/8	S-4074L	6.889	5.000	2.677	6.103	8.465
4.7/8	S-4078L	7.086	5.000	2.834	6.103	8.465
5	S-4080L	7.322	5.000	2.834	6.148	8.780
5.1/8	S-4082L	7.322	5.000	3.070	6.732	9.094
5.1/4	S-4084L	7.598	5.000	3.070	6.732	9.094
5.3/8	S-4086L	7.716	5.000	3.149	6.732	9.094
5.1/2	S-4088L	7.874	5.000	3.385	7.087	9.449
5.5/8	S-4090L	7.874	5.000	3.385	7.087	9.449
5.3/4	S-4092L	8.070	5.984	3.385	7.087	9.449
6.1/8	S-4098L	8.582	5.984	3.543	7.402	9.764
6.1/2	S-40104L	9.133	6.889	3.858	8.032	10.394
6.7/8	S-40110L	9.566	6.889	4.055	8.032	10.394
7	S-40112L	9.842	6.889	4.055	8.347	10.709
7.1/4	S-40116L	10.039	6.889	4.330	8.347	10.709
7.1/2	S-40120L	10.433	6.889	4.448	8.504	10.866
7.5/8	S-40122L	10.629	6.889	4.448	8.662	11.024
7.3/4	S-40124L	10.826	6.889	4.448	8.819	11.181
7.7/8	S-40126L	10.826	6.889	4.645	8.819	11.181
8	S-40128L	11.023	6.889	4.645	9.331	11.693
8.1/8	S-40130L	11.220	6.889	4.645	9.331	11.693
8.1/4	S-40132L	11.220	6.889	4.763	9.331	11.693
8.3/8	S-40134L	11.417	6.889	4.763	9.331	11.693
8.1/2	S-40136L	11.614	6.889	4.921	9.331	12.441
9	S-40144L	12.283	6.889	5.196	10.079	12.441
9.1/4	S-40148L	12.401	6.889	5.354	11.811	14.173

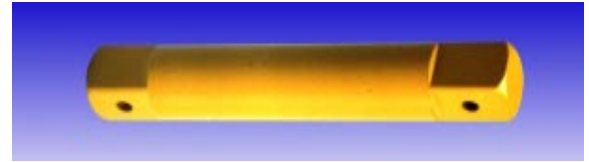


2 1/2"

# IMPACT ACCESSORIES

## DOUBLE MALE EXTENSIONS

OAL mmc (inch)	MODEL NO.	SHANK DIA mm (inch)	HEAD DIA mm (inch)
125 (5")	S4005	85.0 (3.346)	63.5 (2.500)
150 (6")	S4006		
200 (8")	S4008		
250 (10")	S4010	85.0 (3.346)	63.5 (2.500)
380 (15")	S4015		
510 (20")	S4020		



## SQUARE ADAPTORS

SIZE	MODEL NO.	HEAD DIA mm (inch)	OAL mm (inch)
2.1/2" F X 1.1/2" M	A4024	127.0 (5.000)	140.0 (5.511)
2.1/2" F X 3.1/2" M	A4056		185.0 (7.283)



## DOUBLE FEMALE ADAPTORS

SIZE	MODEL NO.	HEAD DIA mm (inch)	OAL mm (inch)
2.1/2" F X 1.1/2" F	AN4024	127.0 (5.000)	115.0 (4.527)
2.1/2" F X 2.1/2" F	AN4040		120.0 (4.724)
2.1/2" F X 3.1/2" F	AN4056		162.0 (6.377)



## UNIVERSAL JOINT

SQUARE DRIVE	MODEL NO.	DIA mm (inch)	OAL mm (inch)
2.1/2"	U4040	127.0 (5.000)	232.0 (9.133)



TORQTOOL Impact Socket used along with a TORQPLUS Torque Multiplier

# IMPACT SOCKETS

3 1/2"

## METRIC HEXAGON

A/F mm	MODEL NO.	D1 mm	D2 mm	T mm	C mm	OAL mm
120	S-56M120	180.0	175.0	72.0	102.0	182.0
130	S-56M130	193.0	175.0	80.0	110.0	190.0
135	S-56M135	197.0	175.0	83.0	118.0	198.0
145	S-56M145	213.0	175.0	86.0	134.0	214.0
150	S-56M150	218.0	175.0	90.0	134.0	214.0
155	S-56M155	225.0	175.0	92.0	134.0	214.0
165	S-56M165	237.0	175.0	98.0	151.0	231.0
170	S-56M170	243.0	175.0	100.0	151.0	231.0
175	S-56M175	249.0	175.0	102.0	151.0	231.0
180	S-56M180	255.0	175.0	108.0	157.0	237.0
195	S-56M195	275.0	175.0	118.0	165.0	245.0
200	S-56M200	280.0	175.0	120.0	170.0	250.0
215	S-56M215	298.0	175.0	125.0	183.0	263.0
230	S-56M230	317.0	175.0	132.0	199.0	279.0
235	S-56M235	325.0	175.0	136.0	199.0	279.0

## FRACTIONAL HEXAGON

A/F inch	MODEL NO.	D1 inch	D2 inch	T inch	C inch	OAL inch
4.5/8	S-5674	6.889	6.889	2.834	4.015	7.165
4.7/8	S-5678	7.283	6.889	2.834	4.330	7.480
5.1/4	S-5684	7.755	6.889	3.149	4.645	7.795
5.3/8	S-5686	7.874	6.889	3.267	4.645	7.795
5.5/8	S-5690	8.267	6.889	3.385	5.275	8.425
5.3/4	S-5692	8.385	6.889	3.385	5.275	8.425
6	S-5696	8.700	6.889	3.543	5.275	8.425
6.1/8	S-5698	8.858	6.889	3.622	5.275	8.425
6.1/2	S-56104	9.330	6.889	3.858	5.944	9.094
6.7/8	S-56110	9.803	6.889	4.015	5.944	9.094
7.1/4	S-56116	10.275	6.889	4.409	6.181	9.330
7.5/8	S-56122	10.826	6.889	4.645	6.496	9.645
8	S-56128	11.220	6.889	4.724	7.204	10.354
8.3/8	S-56134	11.653	6.889	4.803	7.204	10.354
9.1/8	S-56146	12.598	6.889	5.196	7.834	10.984

## METRIC DEEP HEXAGON

A/F mm	MODEL NO.	D1 mm	D2 mm	T mm	C mm	OAL mm
120	S-56M120L	180.0	175.0	72.0	197.0	277.0
130	S-56M130L	193.0	175.0	80.0	200.0	280.0
135	S-56M135L	197.0	175.0	83.0	200.0	280.0
145	S-56M145L	213.0	175.0	86.0	215.0	295.0
150	S-56M150L	218.0	175.0	90.0	215.0	295.0
155	S-56M155L	225.0	175.0	92.0	217.0	297.0
165	S-56M165L	237.0	175.0	98.0	233.0	313.0
170	S-56M170L	243.0	175.0	100.0	233.0	313.0
175	S-56M175L	249.0	175.0	102.0	233.0	313.0
180	S-56M180L	255.0	175.0	108.0	240.0	320.0
195	S-56M195L	275.0	175.0	118.0	248.0	328.0
200	S-56M200L	280.0	175.0	120.0	252.0	332.0
215	S-56M215L	298.0	175.0	125.0	266.0	346.0
230	S-56M230L	317.0	175.0	132.0	279.0	359.0
235	S-56M235L	325.0	175.0	136.0	282.0	362.0

## FRACTIONAL DEEP HEXAGON

A/F inch	MODEL NO.	D1 inch	D2 inch	T inch	C inch	OAL inch
4.5/8	S-5674L	6.889	6.889	2.834	7.756	10.906
4.7/8	S-5678L	7.283	6.889	2.834	7.756	10.906
5.1/4	S-5684L	7.755	6.889	3.149	7.874	11.024
5.3/8	S-5686L	7.874	6.889	3.267	7.874	11.024
5.5/8	S-5690L	8.267	6.889	3.385	8.543	11.693
5.3/4	S-5692L	8.385	6.889	3.385	8.543	11.693
6	S-5696L	8.700	6.889	3.543	8.543	11.693
6.1/8	S-5698L	9.055	6.889	3.622	8.543	11.693
6.1/2	S-56104L	9.330	6.889	3.858	9.173	12.323
6.7/8	S-56110L	9.803	6.889	4.015	9.173	12.323
7.1/4	S-56116L	10.275	6.889	4.409	9.448	12.598
7.5/8	S-56122L	10.826	6.889	4.645	9.763	12.913
8	S-56128L	11.220	6.889	4.724	10.472	13.322
8.3/8	S-56134L	11.653	6.889	4.803	10.472	13.622
9.1/8	S-56146L	12.598	6.889	5.196	11.102	14.252

# IMPACT ACCESSORIES

## DOUBLE MALE EXTENSIONS

OAL mm (inch)	MODEL NO.	SHANK DIA mm (inch)	HEAD DIA mm (inch)
250 (10")	S5610	120.0 (4.724)	175.0 (6.889)
510 (20")	S5620		



## SQUARE ADAPTORS

SIZE	MODEL NO.	HEAD DIA mm (inch)	OAL mm (inch)
3.1/2" F X 2.1/2" M	A5640	175.0 (6.889)	185.0 (7.283)



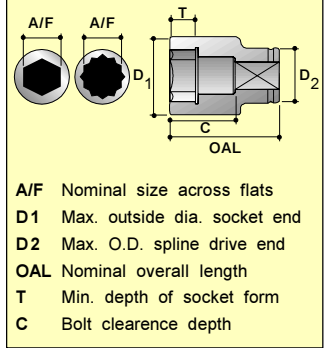
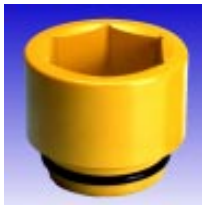
## DOUBLE FEMALE ADAPTORS

SIZE	MODEL NO.	HEAD DIA mm (inch)	OAL mm (inch)
3.1/2" F X 2.1/2" F	AN5640	175.0 (6.889)	165.0 (6.496)





# IMPACT SOCKETS



## METRIC # 5 SPLINE

A/F mm	MODEL NO.	D1 mm	D2 mm	T mm	C mm	OAL mm
19	S-95M19	48.0	56.0	14.0	25.0	70.0
20	S-95M20	48.0	56.0	14.0	25.0	70.0
21	S-95M21	48.0	56.0	14.0	25.0	70.0
22	S-95M22	48.0	56.0	14.0	25.0	70.0
23	S-95M23	48.0	56.0	14.0	25.0	70.0
24	S-95M24	50.0	56.0	16.0	25.0	70.0
25	S-95M25	50.0	56.0	16.0	25.0	70.0
26	S-95M26	52.0	56.0	16.0	25.0	70.0
27	S-95M27	52.0	56.0	16.0	25.0	70.0
28	S-95M28	52.0	56.0	16.0	25.0	70.0
29	S-95M29	54.0	56.0	16.0	25.0	70.0
30	S-95M30	54.0	56.0	21.0	25.0	70.0
31	S-95M31	60.0	56.0	21.0	25.0	75.0
32	S-95M32	60.0	56.0	21.0	25.0	75.0
33	S-95M33	60.0	56.0	21.0	25.0	75.0
34	S-95M34	60.0	56.0	21.0	32.0	77.0
35	S-95M35	60.0	56.0	21.0	32.0	77.0
36	S-95M36	63.0	56.0	25.0	35.0	80.0
37	S-95M37	63.0	56.0	25.0	35.0	80.0
38	S-95M38	63.0	56.0	25.0	35.0	80.0
39	S-95M39	67.0	56.0	25.0	35.0	80.0
40	S-95M40	67.0	56.0	25.0	35.0	80.0
41	S-95M41	67.0	56.0	28.0	35.0	80.0
42	S-95M42	67.0	56.0	28.0	35.0	80.0
43	S-95M43	67.0	56.0	28.0	39.0	84.0
44	S-95M44	73.0	56.0	28.0	39.0	84.0
45	S-95M45	73.0	56.0	28.0	39.0	84.0
46	S-95M46	73.0	56.0	28.0	39.0	84.0
47	S-95M47	73.0	56.0	28.0	39.0	84.0
48	S-95M48	73.0	56.0	28.0	43.0	88.0
49	S-95M49	73.0	56.0	28.0	43.0	88.0
50	S-95M50	82.0	56.0	28.0	43.0	88.0
51	S-95M51	82.0	56.0	28.0	43.0	88.0
52	S-95M52	82.0	56.0	28.0	43.0	88.0
54	S-95M54	82.0	56.0	28.0	48.0	93.0
55	S-95M55	82.0	56.0	30.0	48.0	93.0
56	S-95M56	88.0	86.0	30.0	51.0	96.0
57	S-95M57	88.0	86.0	30.0	51.0	96.0
58	S-95M58	88.0	86.0	30.0	51.0	96.0
59	S-95M59	88.0	86.0	30.0	51.0	96.0
60	S-95M60	88.0	86.0	32.0	51.0	96.0
61	S-95M61	88.0	86.0	32.0	53.0	98.0
62	S-95M62	88.0	86.0	32.0	55.0	100.0
65	S-95M65	100.0	86.0	38.0	55.0	100.0
67	S-95M67	100.0	86.0	38.0	57.0	102.0
70	S-95M70	100.0	86.0	40.0	57.0	102.0
73	S-95M73	105.0	86.0	40.0	63.0	108.0
75	S-95M75	105.0	86.0	42.0	63.0	108.0
76	S-95M76	109.0	86.0	42.0	69.0	114.0
80	S-95M80	115.0	86.0	44.0	69.0	114.0

## FRACTIONAL # 5 SPLINE

A/F inch	MODEL NO.	D1 inch	D2 inch	T inch	C inch	OAL inch
3/4	S-9512	1.889	2.362	0.551	0.984	2.755
13/16	S-9513	1.889	2.362	0.551	0.984	2.755
7/8	S-9514	1.889	2.362	0.551	0.984	2.755
15/16	S-9515	1.968	2.362	0.629	0.984	2.755
1	S-9516	1.968	2.362	0.629	0.984	2.755
1.1/16	S-9517	2.047	2.362	0.629	0.984	2.755
1.1/8	S-9518	2.047	2.362	0.629	0.984	2.755
1.3/16	S-9519	2.125	2.362	0.826	0.984	2.755
1.1/4	S-9520	2.362	2.362	0.826	1.181	2.952
1.5/16	S-9521	2.362	2.362	0.826	1.181	2.952
1.3/8	S-9522	2.362	2.362	0.826	1.259	3.031
1.7/16	S-9523	2.480	2.362	0.984	1.377	3.149
1.1/2	S-9524	2.480	2.362	0.984	1.377	3.149
1.9/16	S-9525	2.637	2.362	0.984	1.377	3.149
1.5/8	S-9526	2.637	2.362	1.102	1.377	3.149
1.11/16	S-9527	2.637	2.362	1.102	1.535	3.307
1.3/4	S-9528	2.874	2.362	1.102	1.535	3.307
1.13/16	S-9529	2.874	2.362	1.102	1.535	3.307
1.7/8	S-9530	2.874	2.362	1.102	1.535	3.307
1.15/16	S-9531	2.874	2.362	1.102	1.692	3.464
2	S-9532	3.228	2.362	1.102	1.692	3.464
2.1/16	S-9533	3.228	2.362	1.102	1.692	3.464
2.1/8	S-9534	3.228	2.362	1.102	1.889	3.661
2.3/16	S-9535	3.228	2.362	1.181	1.889	3.661
2.1/4	S-9536	3.464	3.385	1.181	2.007	3.779
2.5/16	S-9537	3.464	3.385	1.181	2.007	3.779
2.3/8	S-9538	3.464	3.385	1.259	2.007	3.779
2.7/16	S-9539	3.464	3.385	1.259	2.086	3.937
2.1/2	S-9540	3.937	3.385	1.259	2.086	3.937
2.9/16	S-9541	3.937	3.385	1.496	2.086	3.937
2.5/8	S-9542	3.937	3.385	1.496	2.244	4.015
2.11/16	S-9543	3.937	3.385	1.496	2.244	4.015
2.3/4	S-9544	3.937	3.385	1.574	2.244	4.015
2.13/16	S-9545	4.133	3.385	1.574	2.244	4.015
2.7/8	S-9546	4.133	3.385	1.574	2.480	4.251
2.15/16	S-9547	4.133	3.385	1.653	2.480	4.251
3	S-9548	4.291	3.385	1.653	2.716	4.488
3.1/16	S-9549	4.291	3.385	1.653	2.716	4.488
3.1/8	S-9550	4.291	3.385	1.653	2.716	4.488
3.1/4	S-9552	5.039	3.385	1.732	3.149	4.921
3.5/16	S-9553	5.039	3.385	1.732	3.149	4.921
3.3/8	S-9554	5.039	3.385	1.850	3.149	4.921
3.1/2	S-9556	5.118	3.385	1.850	3.149	4.921
3.5/8	S-9558	5.275	3.385	1.968	3.149	4.921
3.3/4	S-9560	5.354	3.385	2.125	3.149	4.921
3.7/8	S-9562	5.433	3.385	2.125	3.149	4.921
4	S-9564	5.511	3.385	2.125	3.149	4.921

# IMPACT SOCKETS



## METRIC DEEP # 5 SPLINE



A/F mm	MODEL NO.	D1 mm	D2 mm	T mm	C mm	OAL mm
21	S-95M21L	48.0	56.0	14.0	115.0	160.0
22	S-95M22L	48.0	56.0	14.0	115.0	160.0
23	S-95M23L	48.0	56.0	14.0	115.0	160.0
24	S-95M24L	50.0	56.0	16.0	115.0	160.0
25	S-95M25L	50.0	56.0	16.0	115.0	160.0
26	S-95M26L	52.0	56.0	16.0	115.0	160.0
27	S-95M27L	52.0	56.0	16.0	115.0	160.0
28	S-95M28L	52.0	56.0	16.0	115.0	160.0
29	S-95M29L	54.0	56.0	16.0	115.0	160.0
30	S-95M30L	54.0	56.0	21.0	115.0	160.0
31	S-95M31L	60.0	56.0	21.0	115.0	160.0
32	S-95M32L	60.0	56.0	21.0	115.0	160.0
33	S-95M33L	60.0	56.0	21.0	115.0	160.0
34	S-95M34L	60.0	56.0	21.0	115.0	160.0
35	S-95M35L	60.0	56.0	21.0	115.0	160.0
36	S-95M36L	63.0	56.0	25.0	115.0	160.0
37	S-95M37L	63.0	56.0	25.0	115.0	160.0
38	S-95M38L	63.0	56.0	25.0	115.0	160.0
39	S-95M39L	67.0	56.0	25.0	115.0	160.0
40	S-95M40L	67.0	56.0	25.0	115.0	160.0
41	S-95M41L	67.0	56.0	28.0	115.0	160.0
42	S-95M42L	67.0	56.0	28.0	115.0	160.0
43	S-95M43L	67.0	56.0	28.0	115.0	160.0
44	S-95M44L	73.0	56.0	28.0	115.0	160.0
45	S-95M45L	73.0	56.0	28.0	115.0	160.0
46	S-95M46L	73.0	56.0	28.0	115.0	160.0
47	S-95M47L	73.0	56.0	28.0	115.0	160.0
48	S-95M48L	73.0	56.0	28.0	115.0	160.0
49	S-95M49L	73.0	56.0	28.0	115.0	160.0
50	S-95M50L	82.0	56.0	28.0	115.0	160.0
51	S-95M51L	82.0	56.0	28.0	115.0	160.0
52	S-95M52L	82.0	56.0	28.0	115.0	160.0

## FRACTIONAL DEEP # 5 SPLINE



A/F inch	MODEL NO.	D1 inch	D2 inch	T inch	C inch	OAL inch
3/4	S-9512L	1.889	2.362	0.551	4.527	6.299
13/16	S-9513L	1.889	2.362	0.551	4.527	6.299
7/8	S-9514L	1.889	2.362	0.551	4.527	6.299
15/16	S-9515L	1.968	2.362	0.629	4.527	6.299
1	S-9516L	1.968	2.362	0.629	4.527	6.299
1.1/16	S-9517L	2.047	2.362	0.629	4.527	6.299
1.1/8	S-9518L	2.047	2.362	0.629	4.527	6.299
1.3/16	S-9519L	2.125	2.362	0.826	4.527	6.299
1.1/4	S-9520L	2.362	2.362	0.826	4.527	6.299
1.5/16	S-9521L	2.362	2.362	0.826	4.527	6.299
1.3/8	S-9522L	2.362	2.362	0.826	4.527	6.299
1.7/16	S-9523L	2.480	2.362	0.984	4.527	6.299
1.1/2	S-9524L	2.480	2.362	0.984	4.527	6.299
1.9/16	S-9525L	2.637	2.362	0.984	4.527	6.299
1.5/8	S-9526L	2.637	2.362	1.102	4.527	6.299
1.11/16	S-9527L	2.637	2.362	1.102	4.527	6.299
1.3/4	S-9528L	2.874	2.362	1.102	4.527	6.299
1.13/16	S-9529L	2.874	2.362	1.102	4.527	6.299
1.7/8	S-9530L	2.874	2.362	1.102	4.527	6.299
1.15/16	S-9531L	2.874	2.362	1.102	4.527	6.299
2	S-9532L	3.228	2.362	1.102	4.527	6.299
2.1/16	S-9533L	3.228	2.362	1.102	4.527	6.299
2.1/8	S-9534L	3.228	2.362	1.102	4.527	6.299
2.3/16	S-9535L	3.228	2.362	1.181	4.527	6.299
2.1/4	S-9536L	3.464	3.385	1.181	4.527	6.299
2.5/16	S-9537L	3.464	3.385	1.181	4.527	6.299
2.3/8	S-9538L	3.464	3.385	1.259	4.527	6.299
2.7/16	S-9539L	3.464	3.385	1.259	4.527	6.299
2.1/2	S-9540L	3.937	3.385	1.259	4.527	6.299
2.9/16	S-9541L	3.937	3.385	1.496	4.527	6.299
2.5/8	S-9542L	3.937	3.385	1.496	4.527	6.299
2.11/16	S-9543L	3.937	3.385	1.496	4.527	6.299

# IMPACT ACCESSORIES

## REGULAR EXTENSIONS

OAL mm (inch)	MODEL NO.	SHANK DIA mm (inch)	HEAD DIA mm (inch)
200 (8") 381 (15")	E9508 E9515	42.0 (1.653)	60.0 (2.362)



## SPLINE ADAPTORS

SIZE	MODEL NO.	HEAD DIA mm (inch)	OAL mm (inch)
# 5 F X 1" M # 5 F X 1.1/2" M	A9516 A9524	60.0 (2.362)	90.0 (3.543) 100.0 (3.937)



## UNIVERSAL JOINT

SPLINE DRIVE	MODEL NO.	DIA mm (inch)	OAL mm (inch)
# 5	# 5 SPLINE	60.0 (2.362)	152.0 (6.000)



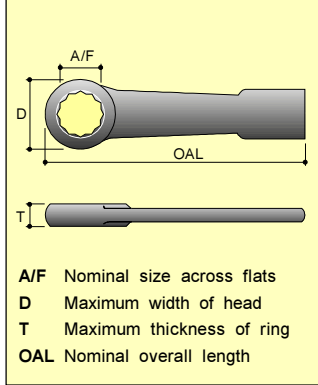
# SLUGGING WRENCHES



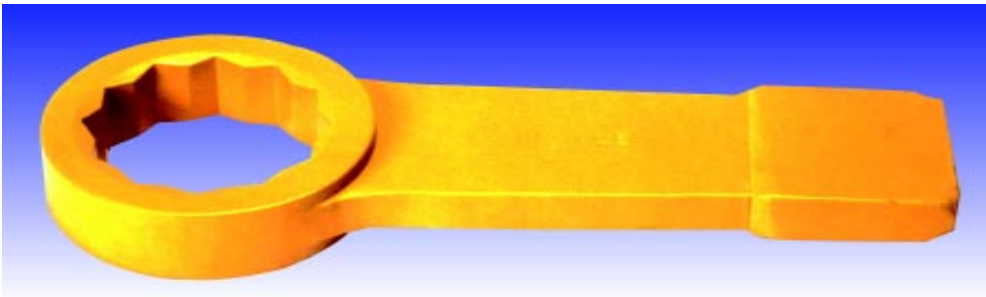
## 'TORQSLEDGE' SLUGGING WRENCHES

1. Drop forged from high tensile alloy.
2. Machined to closed tolerances to ISO specifications.
3. Heat treated to achieve optimum Impact resistance.
4. Electroplating followed by black oxidizing to prevent from rusting.
5. Larger striking area to increase safety in use.
6. Greater sectional area for longer life.
7. Hexagon opening depth to ensure positive seating on nuts / bolts.
8. Chamfered openings for ease of location on nuts / bolts.
9. Greater offset height allows clear hammering in offset Slugging Wrenches.
10. Clear marking of size and model.





# STRAIGHT SLUGGING WRENCHES



## METRIC BIHEXAGON



A / F mm	MODEL NO.	T mm	D mm	OAL mm	Wt. Kg.
22	MSW22	18.0	48.0	182.0	0.610
23	MSW23	18.0	48.0	182.0	0.610
24	MSW24	18.0	48.0	182.0	0.610
25	MSW25	18.0	48.0	182.0	0.590
26	MSW26	18.0	48.0	182.0	0.590
27	MSW27	18.0	48.0	182.0	0.590
28	MSW28	18.0	54.0	185.0	0.580
29	MSW29	18.0	54.0	185.0	0.560
30	MSW30	18.0	54.0	185.0	0.550
31	MSW31	18.0	54.0	185.0	0.540
32	MSW32	18.0	54.0	185.0	0.550
33	MSW33	18.0	54.0	185.0	0.540
34	MSW34	18.0	54.0	185.0	0.540
35	MSW35	18.0	54.0	185.0	0.540
36	MSW36	22.0	64.0	215.0	1.060
37	MSW37	22.0	64.0	215.0	1.060
38	MSW38	22.0	64.0	215.0	1.040
39	MSW39	22.0	64.0	215.0	1.030
40	MSW40	22.0	64.0	215.0	1.030
41	MSW41	22.0	64.0	215.0	1.030
42	MSW42	22.0	64.0	215.0	1.020
43	MSW43	25.0	76.0	238.0	1.480
44	MSW44	25.0	76.0	238.0	1.470
45	MSW45	25.0	76.0	238.0	1.430
46	MSW46	25.0	76.0	238.0	1.400
47	MSW47	25.0	76.0	238.0	1.380
48	MSW48	25.0	80.0	240.0	1.360
49	MSW49	25.0	80.0	240.0	1.350
50	MSW50	25.0	80.0	240.0	1.340
51	MSW51	25.0	80.0	240.0	1.400
52	MSW52	25.0	80.0	240.0	1.400
54	MSW54	25.0	80.0	240.0	2.350
55	MSW55	28.0	88.0	262.0	2.320
56	MSW56	28.0	88.0	262.0	2.325
57	MSW57	28.0	88.0	262.0	2.310
58	MSW58	28.0	88.0	262.0	2.300
59	MSW59	28.0	94.0	265.0	2.250
60	MSW60	28.0	94.0	265.0	2.140
61	MSW61	28.0	94.0	265.0	2.140
62	MSW62	28.0	94.0	265.0	2.500
65	MSW65	30.0	104.0	285.0	2.710
67	MSW67	30.0	104.0	285.0	2.770
70	MSW70	35.0	110.0	315.0	3.410
73	MSW73	35.0	110.0	315.0	3.410
75	MSW75	35.0	110.0	315.0	3.400

## METRIC BIHEXAGON (cont.)



A / F mm	MODEL NO.	T mm	D mm	OAL mm	Wt. Kg.
76	MSW76	35.0	110.0	315.0	3.370
80	MSW80	38.0	126.0	340.0	4.860
85	MSW85	38.0	126.0	340.0	4.400
86	MSW86	38.0	126.0	340.0	4.300
90	MSW90	42.0	152.0	400.0	4.650
95	MSW95	42.0	152.0	400.0	4.360
100	MSW100	42.0	152.0	400.0	7.490
105	MSW105	50.0	172.0	410.0	10.580
110	MSW110	50.0	172.0	435.0	11.670
115	MSW115	50.0	172.0	435.0	10.760
120	MSW120	56.0	194.0	475.0	16.070
125	MSW125	56.0	194.0	475.0	16.960
130	MSW130	60.0	205.0	505.0	16.850
135	MSW135	60.0	205.0	510.0	16.550
140	MSW140	65.0	230.0	565.0	19.000
145	MSW145	65.0	230.0	565.0	18.810
150	MSW150	65.0	230.0	565.0	18.550
155	MSW155	65.0	230.0	565.0	18.350
160	MSW160	70.0	270.0	635.0	29.900
165	MSW165	70.0	270.0	635.0	29.700
170	MSW170	70.0	270.0	635.0	29.250
175	MSW175	70.0	270.0	635.0	28.850
180	MSW180	70.0	270.0	635.0	28.500
185	MSW185	75.0	295.0	680.0	35.600
190	MSW190	75.0	295.0	680.0	35.400
195	MSW195	75.0	295.0	680.0	35.200
200	MSW200	75.0	295.0	680.0	34.900
205	MSW205	75.0	295.0	680.0	34.700
210	MSW210	80.0	325.0	725.0	50.850
215	MSW215	80.0	325.0	725.0	50.550
220	MSW220	80.0	325.0	725.0	50.100
225	MSW225	80.0	325.0	725.0	49.800
230	MSW230	80.0	325.0	725.0	49.500



Table continued next column



# STRAIGHT SLUGGING WRENCHES



## FRACTIONAL BIHEXAGON



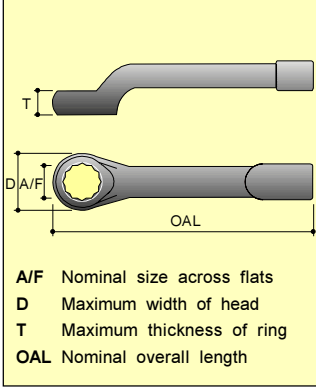
A / F inch	MODEL NO.	T inch	D inch	OAL inch	Wt. lbs.
7/8	ASW14	0.708	1.889	7.165	1.390
15/16	ASW15	0.708	1.889	7.165	1.340
1	ASW16	0.708	1.889	7.165	1.320
1.1/16	ASW17	0.708	1.889	7.165	1.300
1.1/8	ASW18	0.708	2.125	7.283	1.365
1.3/16	ASW19	0.708	2.125	7.283	1.200
1.1/4	ASW20	0.708	2.125	7.283	1.500
1.5/16	ASW21	0.708	2.125	7.283	1.200
1.3/8	ASW22	0.708	2.125	7.283	1.200
1.7/16	ASW23	0.866	2.519	8.464	2.300
1.1/2	ASW24	0.866	2.519	8.464	2.400
1.9/16	ASW25	0.866	2.519	8.464	2.350
1.5/8	ASW26	0.866	2.519	8.464	2.300
1.11/16	ASW27	0.984	2.992	9.370	3.080
1.3/4	ASW28	0.984	2.992	9.370	3.080
1.13/16	ASW29	0.984	2.992	9.370	3.080
1.7/8	ASW30	0.984	2.992	9.370	3.230
1.15/16	ASW31	0.984	3.149	9.448	3.230
2	ASW32	0.984	3.149	9.448	3.080
2.1/16	ASW33	0.984	3.149	9.448	2.930
2.1/8	ASW34	0.984	3.149	9.448	3.020
2.3/16	ASW35	1.102	3.464	10.314	4.840
2.1/4	ASW36	1.102	3.464	10.314	4.970
2.5/16	ASW37	1.102	3.700	10.433	4.990
2.3/8	ASW38	1.102	3.700	10.433	5.040
2.7/16	ASW39	1.102	3.700	10.433	4.700
2.1/2	ASW40	1.102	3.700	10.433	3.080
2.9/16	ASW41	1.181	4.094	11.220	5.875
2.5/8	ASW42	1.181	4.094	11.220	7.500
2.11/16	ASW43	1.181	4.094	11.220	7.500
2.3/4	ASW44	1.377	4.330	12.401	7.500
2.13/16	ASW45	1.377	4.330	12.401	7.180
2.7/8	ASW46	1.377	4.330	12.401	7.195
2.15/16	ASW47	1.377	4.330	12.401	7.200
3	ASW48	1.377	4.330	12.401	7.400
3.1/16	ASW49	1.496	4.960	13.385	9.130
3.1/8	ASW50	1.496	4.960	13.385	8.910
3.3/16	ASW51	1.496	4.960	13.385	9.130
3.1/4	ASW52	1.496	4.960	13.385	9.350
3.5/16	ASW53	1.496	4.960	13.385	9.570
3.3/8	ASW54	1.496	4.960	13.385	9.680
3.7/16	ASW55	1.653	5.984	15.748	9.460
3.1/2	ASW56	1.653	5.984	15.748	9.460
3.9/16	ASW57	1.653	5.984	15.748	9.500
3.5/8	ASW58	1.653	5.984	15.748	9.480
3.11/16	ASW59	1.653	5.984	15.748	9.530
3.3/4	ASW60	1.653	5.984	15.748	9.590
3.13/16	ASW61	1.653	5.984	15.748	9.640

## FRACTIONAL BIHEXAGON (cont.)

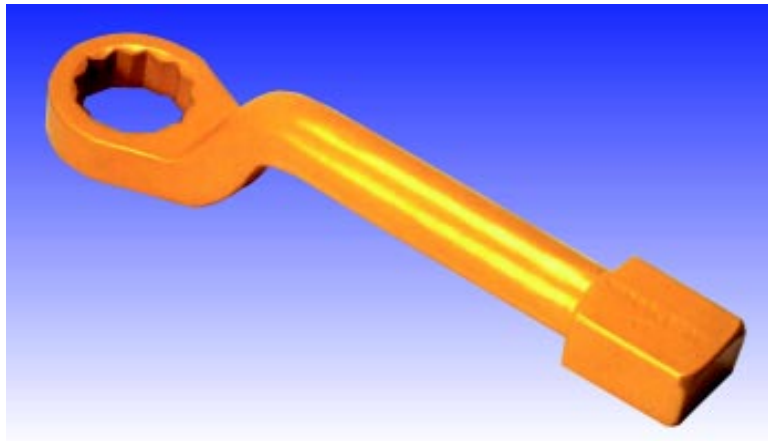


A / F inch	MODEL NO.	T mm	D mm	OAL mm	Wt. lbs.
3.7/8	ASW62	1.653	5.984	15.748	15.000
3.15/16	ASW63	1.653	5.984	15.748	16.480
4	ASW64	1.653	5.984	15.748	19.470
4.1/16	ASW65	1.653	5.984	15.748	19.690
4.1/8	ASW66	1.968	6.771	16.141	23.280
4.3/16	ASW67	1.968	6.771	16.141	23.100
4.1/4	ASW68	1.968	6.771	16.141	22.800
4.5/16	ASW69	1.968	6.771	17.125	24.550
4.3/8	ASW70	1.968	6.771	17.125	24.200
4.7/16	ASW71	1.968	6.771	17.125	23.980
4.1/2	ASW72	1.968	6.771	17.125	23.670
4.5/8	ASW74	2.204	7.637	18.700	29.480
4.3/4	ASW76	2.204	7.637	18.700	29.700
4.7/8	ASW78	2.204	7.637	18.700	37.310
5	ASW80	2.204	8.070	19.881	36.850
5.1/8	ASW82	2.204	8.070	19.881	36.630
5.3/16	ASW83	2.204	8.070	19.881	36.520
5.1/4	ASW84	2.204	8.070	19.881	36.520
5.3/8	ASW86	2.559	9.055	22.244	43.560
5.1/2	ASW88	2.559	9.055	22.244	41.800
5.5/8	ASW90	2.559	9.055	22.244	41.580
5.3/4	ASW92	2.559	9.055	22.244	41.560
5.7/8	ASW94	2.559	9.055	22.244	40.810
6	ASW96	2.559	9.055	22.244	40.370
6.1/8	ASW98	2.559	9.055	22.244	39.820
6.1/4	ASW100	2.755	10.629	25.000	66.550
6.3/8	ASW102	2.755	10.629	25.000	66.000
6.1/2	ASW104	2.755	10.629	25.000	65.340
6.5/8	ASW106	2.755	10.629	25.000	65.120
6.3/4	ASW108	2.755	10.629	25.000	64.240
6.7/8	ASW110	2.755	10.629	25.000	63.470
7	ASW112	2.755	10.629	25.000	63.030
7.1/8	ASW114	2.952	11.614	26.771	78.760
7.1/4	ASW116	2.952	11.614	26.771	78.320
7.3/8	ASW118	2.952	11.614	26.771	78.100
7.1/2	ASW120	2.952	11.614	26.771	78.880
7.5/8	ASW122	2.952	11.614	26.771	77.660
7.3/4	ASW124	2.952	11.614	26.771	77.440
7.13/16	ASW125	2.952	11.614	26.771	76.780
7.7/8	ASW126	2.952	11.614	26.771	76.120
8	ASW128	2.952	11.614	26.771	76.560
8.1/8	ASW130	3.149	12.795	28.543	112.420
8.1/4	ASW132	3.149	12.795	28.543	111.540
8.3/8	ASW134	3.149	12.795	28.543	110.660
8.1/2	ASW136	3.149	12.795	28.543	110.220
8.5/8	ASW138	3.149	12.795	28.543	109.780
8.7/8	ASW142	3.149	12.795	28.543	109.340
9	ASW144	3.149	12.795	28.543	108.900

Table continued next column



# OFFSET SLUGGING WRENCHES



## METRIC BIHEXAGON

A / F mm	MODEL NO.	T mm	D mm	OAL mm	Wt. kg.
24	MOSW24	20.0	42.0	250.0	1.000
27	MOSW27	25.0	52.0	270.0	1.060
30	MOSW30	25.0	52.0	270.0	1.150
32	MOSW32	25.0	52.0	270.0	1.290
34	MOSW34	25.0	52.0	270.0	1.640
35	MOSW35	32.0	68.0	312.0	1.550
36	MOSW36	32.0	68.0	312.0	1.500
38	MOSW38	32.0	68.0	312.0	1.750
40	MOSW40	32.0	68.0	312.0	1.950
41	MOSW41	32.0	68.0	312.0	2.150
43	MOSW43	35.0	82.0	340.0	2.850
46	MOSW46	35.0	82.0	340.0	2.630
47	MOSW47	35.0	82.0	340.0	2.610
48	MOSW48	35.0	82.0	340.0	2.600
49	MOSW49	35.0	82.0	340.0	2.450
50	MOSW50	35.0	82.0	340.0	2.350
51	MOSW51	35.0	82.0	340.0	3.190
52	MOSW52	38.0	82.0	360.0	3.000
54	MOSW54	38.0	82.0	360.0	3.000
55	MOSW55	38.0	82.0	360.0	2.930
56	MOSW56	38.0	82.0	360.0	2.980
57	MOSW57	38.0	82.0	360.0	4.850
58	MOSW58	38.0	82.0	360.0	4.750
59	MOSW59	38.0	82.0	360.0	4.900
60	MOSW60	44.0	110.0	380.0	4.430
61	MOSW61	44.0	110.0	380.0	4.350
62	MOSW62	44.0	110.0	380.0	4.300
65	MOSW65	44.0	110.0	380.0	5.650
67	MOSW67	44.0	110.0	380.0	5.500
70	MOSW70	50.0	127.0	400.0	7.320
73	MOSW73	50.0	127.0	400.0	7.000
75	MOSW75	50.0	127.0	400.0	6.880
76	MOSW76	50.0	127.0	400.0	6.750
80	MOSW80	50.0	127.0	400.0	8.630
85	MOSW85	50.0	127.0	400.0	7.480
86	MOSW86	57.0	152.0	465.0	9.100
90	MOSW90	57.0	152.0	465.0	8.970
95	MOSW95	57.0	152.0	465.0	11.680
100	MOSW100	57.0	152.0	465.0	11.470
105	MOSW105	63.5	194.0	540.0	12.000
110	MOSW110	63.5	194.0	540.0	11.740
115	MOSW115	63.5	194.0	540.0	11.710
120	MOSW120	63.5	194.0	540.0	11.550
125	MOSW125	63.5	194.0	540.0	11.250
130	MOSW130	63.5	194.0	540.0	11.050

## FRACTIONAL BIHEXAGON

A / F inch	MODEL NO.	T inch	D inch	OAL inch	Wt. lbs.
15/16	AOSW15	0.787	1.653	9.842	2.160
1	AOSW16	0.787	1.653	9.842	2.200
1.1/16	AOSW17	0.984	2.047	10.629	2.330
1.1/8	AOSW18	0.984	2.047	10.629	2.220
1.3/16	AOSW19	0.984	2.047	10.629	2.420
1.1/4	AOSW20	0.984	2.047	10.629	2.530
1.5/16	AOSW21	0.984	2.047	10.629	4.070
1.3/8	AOSW22	1.259	2.677	12.283	3.520
1.7/16	AOSW23	1.259	2.677	12.283	3.300
1.1/2	AOSW24	1.259	2.677	12.283	3.890
1.5/8	AOSW26	1.259	2.677	12.283	4.730
1.11/16	AOSW27	1.377	3.228	13.385	4.950
1.3/4	AOSW28	1.377	3.228	13.385	4.840
1.13/16	AOSW29	1.377	3.228	13.385	6.050
1.7/8	AOSW30	1.377	3.228	13.385	6.530
2	AOSW32	1.377	3.228	13.385	6.290
2.1/16	AOSW33	1.496	3.228	14.173	13.180
2.3/16	AOSW35	1.496	3.228	14.173	13.130
2.1/4	AOSW36	1.496	3.228	14.173	11.960
2.5/16	AOSW37	1.496	3.228	14.173	11.550
2.3/8	AOSW38	1.732	4.330	14.960	11.180
2.7/16	AOSW39	1.732	4.330	14.960	16.940
2.1/2	AOSW40	1.732	4.330	14.960	16.940
2.9/16	AOSW41	1.732	4.330	14.960	16.830
2.5/8	AOSW42	1.732	4.330	14.960	16.280
2.3/4	AOSW44	1.968	5.000	15.748	16.104
2.13/16	AOSW45	1.968	5.000	15.748	15.730
2.7/8	AOSW46	1.968	5.000	15.748	15.400
2.15/16	AOSW47	1.968	5.000	15.748	15.400
3	AOSW48	1.968	5.000	15.748	15.140
3.1/8	AOSW50	1.968	5.000	15.748	14.740
3.3/8	AOSW54	2.244	5.984	18.307	23.500
3.1/2	AOSW56	2.244	5.984	18.307	23.430
3.3/4	AOSW60	2.244	5.984	18.307	23.210
3.7/8	AOSW62	2.244	5.984	18.307	22.550
3.15/16	AOSW63	2.244	5.984	18.307	22.220
4.1/8	AOSW66	2.480	7.637	21.259	26.400
4.1/4	AOSW68	2.480	7.637	21.259	26.290
4.5/16	AOSW69	2.480	7.637	21.259	25.830
4.1/2	AOSW72	2.480	7.637	21.259	25.480
4.5/8	AOSW74	2.480	7.637	21.259	24.970
4.3/4	AOSW76	2.480	7.637	21.259	24.420
4.7/8	AOSW78	2.480	7.637	21.259	24.200
5	AOSW80	2.480	7.637	21.259	23.870
5.1/8	AOSW82	2.480	7.637	21.259	23.430



**POWERMASTER INDUSTRIAL EQUIPMENTS PVT. LTD.**

229, PRAGATI INDL. ESTATE, 316, N. M. JOSHI MARG,  
BOMBAY - 400 011, INDIA.

PHONE : 91-22-3000015 / 91-22-3097699 | FAX : 91-22-3073761 / 91-22-4942555

INTERNET : [www.impactsocket.com](http://www.impactsocket.com)

E-MAIL ADDRESS - [mailbox@impactsocket.com](mailto:mailbox@impactsocket.com)